

NOTE! GREENGIRTS AND CUSTOM-PROFILED RIGID INSULATION PANELS ARE PROVIDED FOR THIS PROJECT AS THERMALLY-BROKEN, CONTINUOUS INSULATION ONLY. CUSTOMER TO PROVIDE AND INSTALL CONTINUOUS AIR/WATER AND WEATHER BARRIER SYSTEM PER SPECIFICATIONS AND MANUFACTURER'S DIRECTIONS. CONSULT SMACA AND ABAA FOR PROPER USE OF SEALANT. THIS INSTALLATION MAKES NO CLAIMS OR GUARANTEES ABOUT WEATHER TIGHTNESS, RESISTANCE OR PROTECTION.



SMARTci System

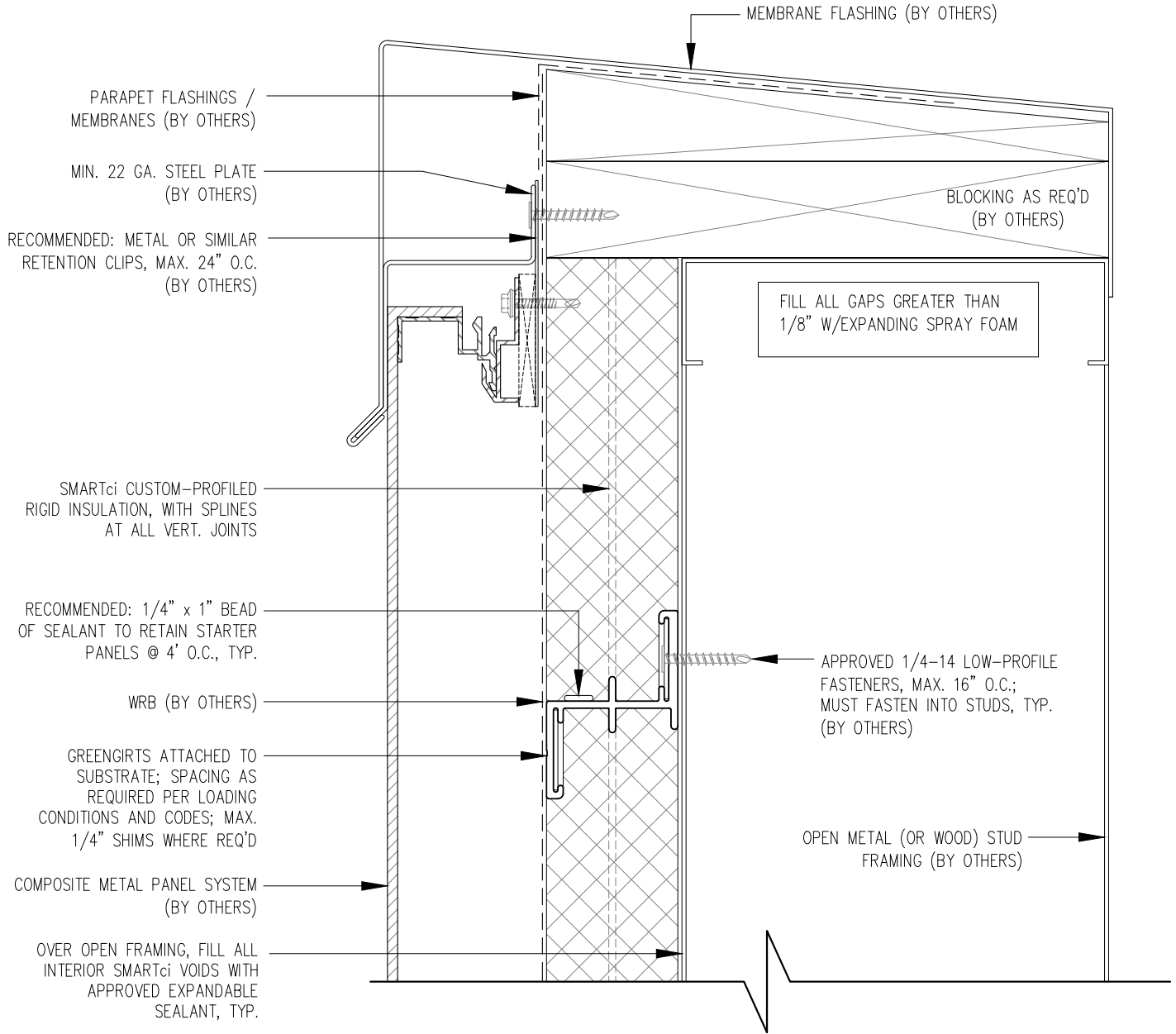
www.SMARTciSystems.com

1 (269) 355-1818

SUBSTRATE: OPEN FRAMING	SMARTci™ RIGID INSULATION PANEL
CLADDING: -ACM PANEL	DATE: 05-22-2018
SIMPLE-Z SIZE: 200	GIRT ORIENTATION: HORIZONTAL

# WALL SECTION

NOT TO SCALE



NOTE! GREENGIRTS AND CUSTOM-PROFILED RIGID INSULATION PANELS ARE PROVIDED FOR THIS PROJECT AS THERMALLY-BROKEN, CONTINUOUS INSULATION ONLY. CUSTOMER TO PROVIDE AND INSTALL CONTINUOUS AIR/WATER AND WEATHER BARRIER SYSTEM PER SPECIFICATIONS AND MANUFACTURER'S DIRECTIONS. CONSULT SMACA AND ABAA FOR PROPER USE OF SEALANT. THIS INSTALLATION MAKES NO CLAIMS OR GUARANTEES ABOUT WEATHER TIGHTNESS, RESISTANCE OR PROTECTION.



**SMARTci System**

[www.SMARTciSystems.com](http://www.SMARTciSystems.com)

1 (269) 355-1818

SUBSTRATE: OPEN FRAMING

CLADDING: -ACM PANEL

SIMPLE-Z SIZE: 200

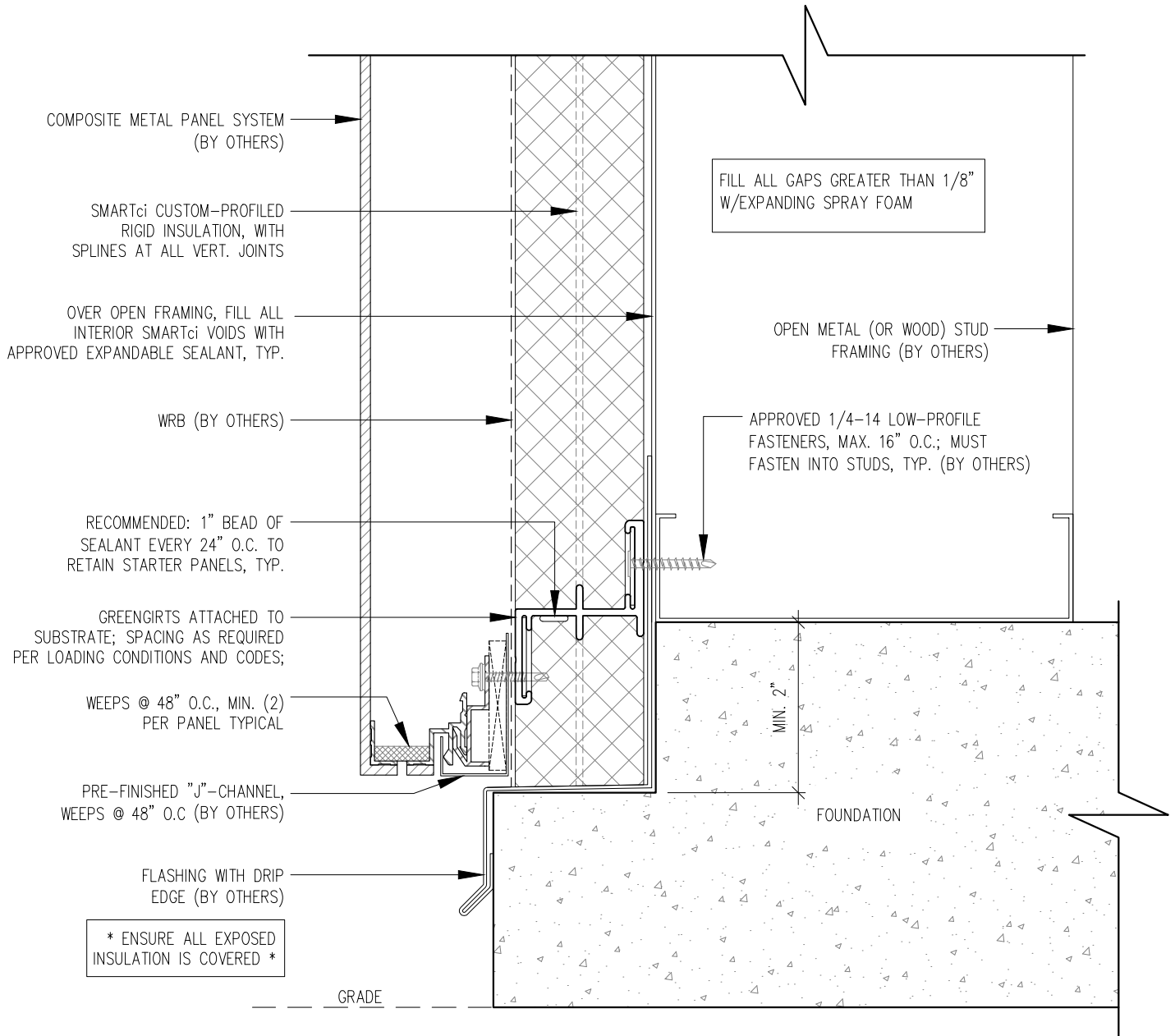
SMARTci™ RIGID INSULATION PANEL

DATE: 05-22-2018

GIRT ORIENTATION: HORIZONTAL

# PARAPET DETAIL

NOT TO SCALE



NOTE! GREENGIRTS AND CUSTOM-PROFILED RIGID INSULATION PANELS ARE PROVIDED FOR THIS PROJECT AS THERMALLY-BROKEN, CONTINUOUS INSULATION ONLY. CUSTOMER TO PROVIDE AND INSTALL CONTINUOUS AIR/WATER AND WEATHER BARRIER SYSTEM PER SPECIFICATIONS AND MANUFACTURER'S DIRECTIONS. CONSULT SMACA AND ABAA FOR PROPER USE OF SEALANT. THIS INSTALLATION MAKES NO CLAIMS OR GUARANTEES ABOUT WEATHER TIGHTNESS, RESISTANCE OR PROTECTION.



**SMARTci System**

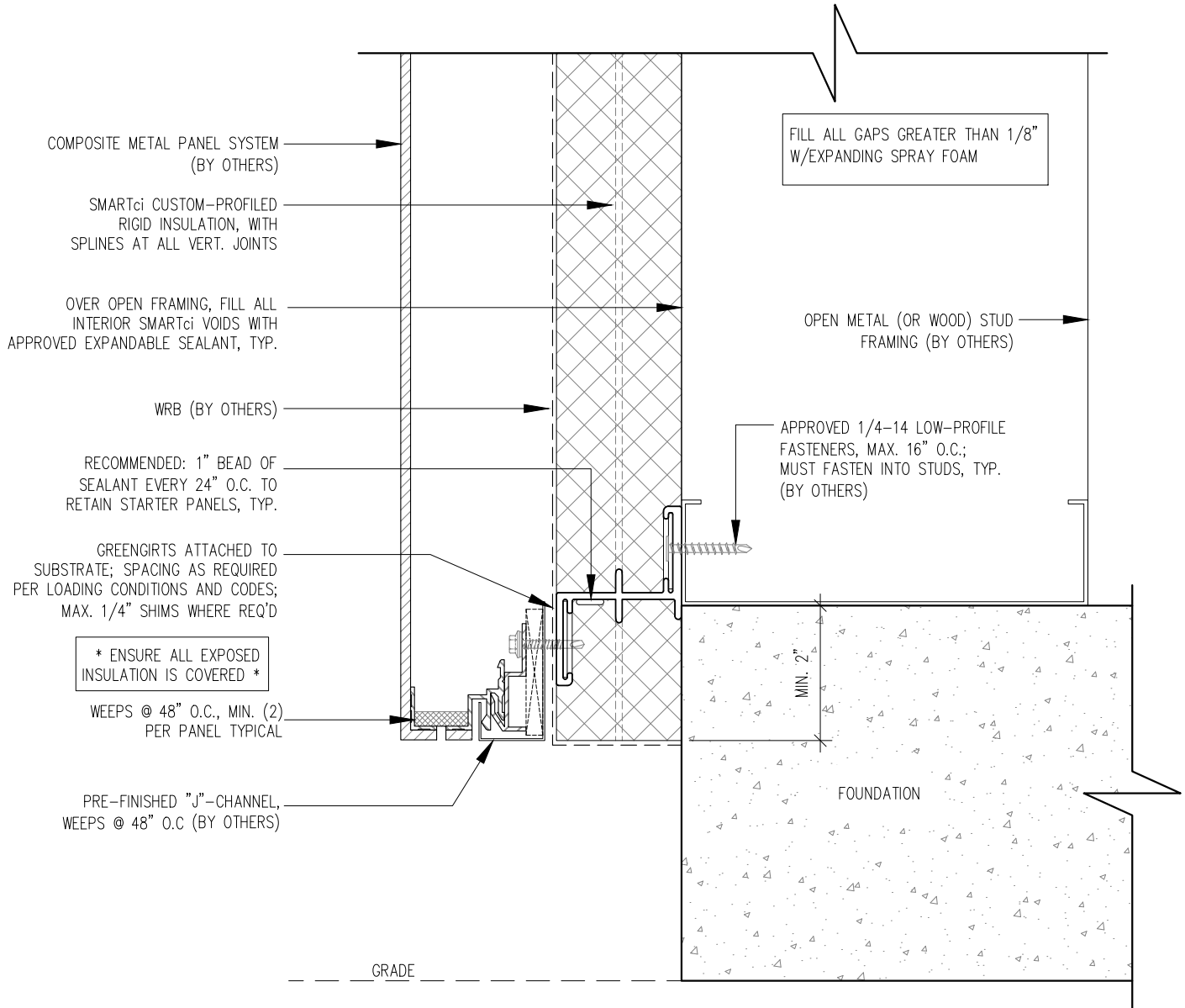
[www.SMARTciSystems.com](http://www.SMARTciSystems.com)

1 (269) 355-1818

SUBSTRATE: OPEN FRAMING	SMARTci™ RIGID INSULATION PANEL
CLADDING: -ACM PANEL	DATE: 05-22-2018
SIMPLE-Z SIZE: 200	GIRT ORIENTATION: HORIZONTAL

# FOUNDATION NOTCH DETAIL

NOT TO SCALE



NOTE! GREENIRTS AND CUSTOM-PROFILED RIGID INSULATION PANELS ARE PROVIDED FOR THIS PROJECT AS THERMALLY-BROKEN, CONTINUOUS INSULATION ONLY. CUSTOMER TO PROVIDE AND INSTALL CONTINUOUS AIR/WATER AND WEATHER BARRIER SYSTEM PER SPECIFICATIONS AND MANUFACTURER'S DIRECTIONS. CONSULT SMACA AND ABAA FOR PROPER USE OF SEALANT. THIS INSTALLATION MAKES NO CLAIMS OR GUARANTEES ABOUT WEATHER TIGHTNESS, RESISTANCE OR PROTECTION.



**SMARTci System**

[www.SMARTciSystems.com](http://www.SMARTciSystems.com)

1 (269) 355-1818

SUBSTRATE: OPEN FRAMING

CLADDING: -ACM PANEL

SIMPLE-Z SIZE: 200

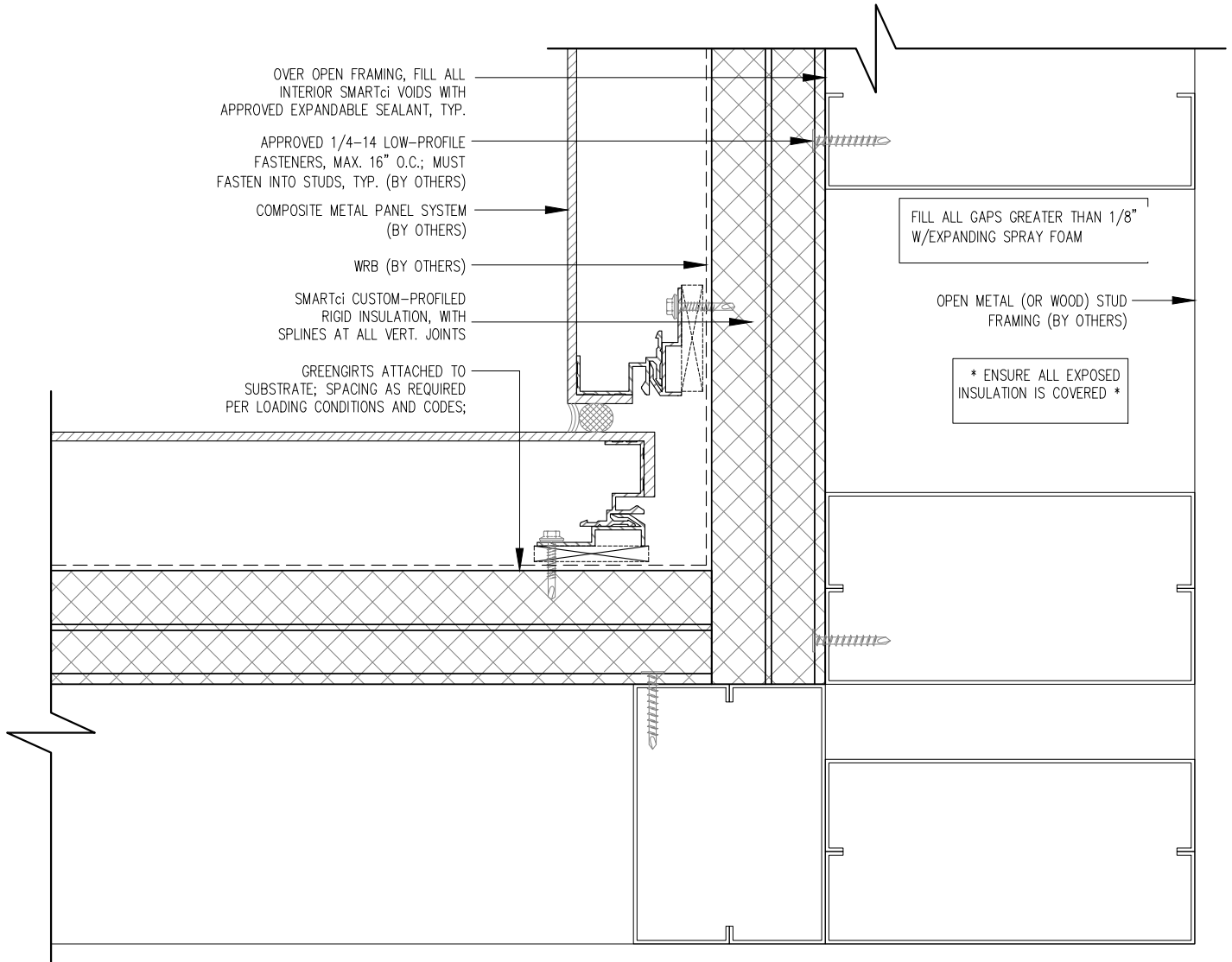
SMARTci™ RIGID INSULATION PANEL

DATE: 05-22-2018

GIRT ORIENTATION: HORIZONTAL

# FOUNDATION FLUSH DETAIL

NOT TO SCALE



NOTE! GREENGIRTS AND CUSTOM-PROFILED RIGID INSULATION PANELS ARE PROVIDED FOR THIS PROJECT AS THERMALLY-BROKEN, CONTINUOUS INSULATION ONLY. CUSTOMER TO PROVIDE AND INSTALL CONTINUOUS AIR/WATER AND WEATHER BARRIER SYSTEM PER SPECIFICATIONS AND MANUFACTURER'S DIRECTIONS. CONSULT SMACA AND ABAA FOR PROPER USE OF SEALANT. THIS INSTALLATION MAKES NO CLAIMS OR GUARANTEES ABOUT WEATHER TIGHTNESS, RESISTANCE OR PROTECTION.



SMARTci System

www.SMARTciSystems.com

1 (269) 355-1818

SUBSTRATE: OPEN FRAMING

CLADDING: -ACM PANEL

SIMPLE-Z SIZE: 200

SMARTci™ RIGID INSULATION PANEL

DATE: 05-22-2018

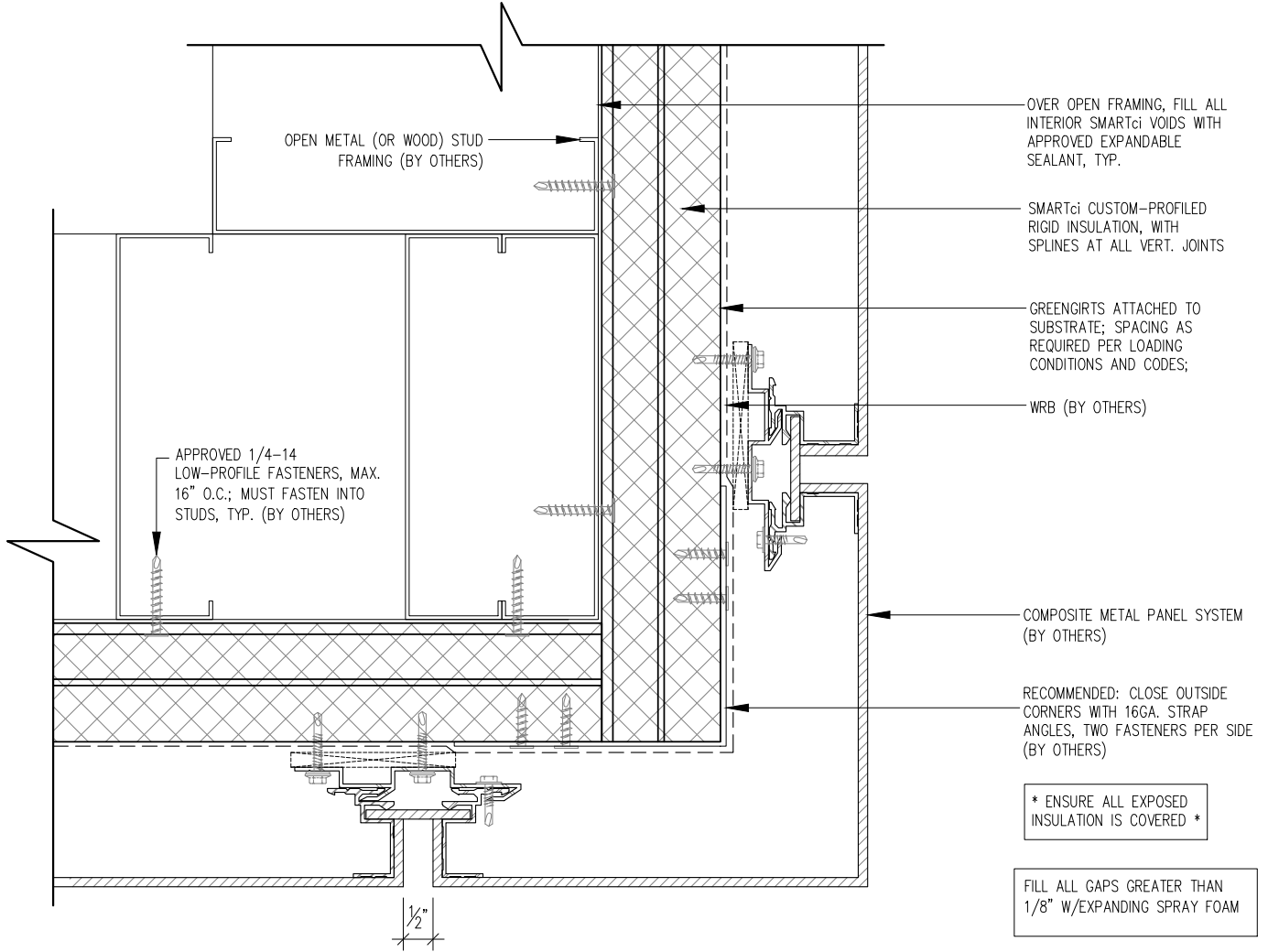
GIRT ORIENTATION: HORIZONTAL

# INSIDE CORNER DETAIL

NOT TO SCALE



NOTE: DETAILS ARE PROVIDED FOR INFORMATION ONLY, AND ARE SUBJECT TO CHANGE WITHOUT NOTICE. SPECIFIC PROJECT ENGINEERING BY OTHERS WILL ADDRESS ATTACHMENT SPACING, ORIENTATION AND LOADING. REFER TO A2P DESIGN GUIDE FOR SEALANT REQUIREMENT. CONTACT ADVANCED ARCHITECTURAL PRODUCTS FOR FURTHER DETAILS, AND TO INQUIRE ABOUT UPDATES AND REVISIONS.



NOTE! GREENIRTS AND CUSTOM-PROFILED RIGID INSULATION PANELS ARE PROVIDED FOR THIS PROJECT AS THERMALLY-BROKEN, CONTINUOUS INSULATION ONLY. CUSTOMER TO PROVIDE AND INSTALL CONTINUOUS AIR/WATER AND WEATHER BARRIER SYSTEM PER SPECIFICATIONS AND MANUFACTURER'S DIRECTIONS. CONSULT SMACA AND ABAA FOR PROPER USE OF SEALANT. THIS INSTALLATION MAKES NO CLAIMS OR GUARANTEES ABOUT WEATHER TIGHTNESS, RESISTANCE OR PROTECTION.



SMARTci System

www.SMARTciSystems.com

1 (269) 355-1818

SUBSTRATE: OPEN FRAMING

CLADDING: -ACM PANEL

SIMPLE-Z SIZE: 200

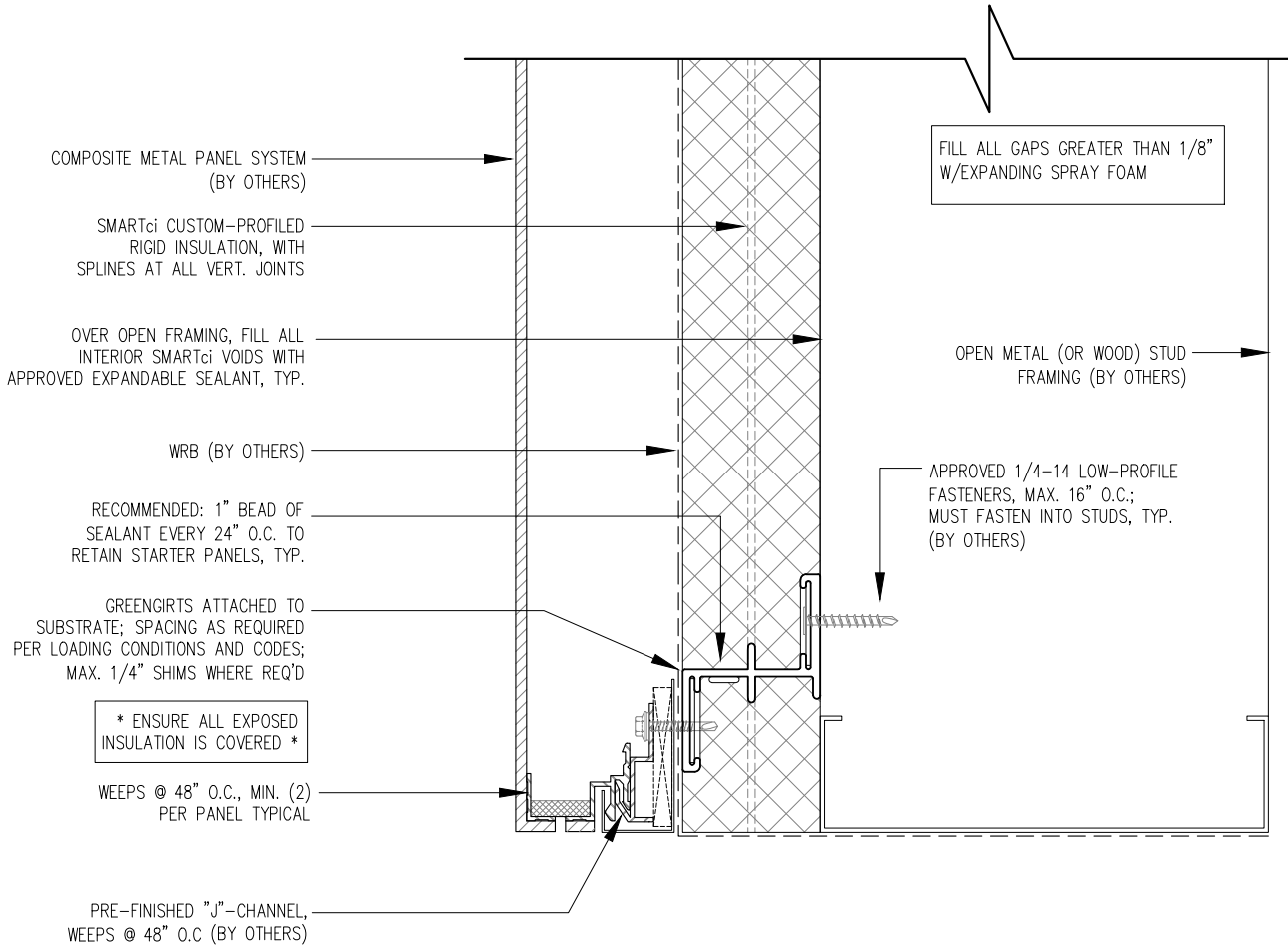
SMARTci™ RIGID INSULATION PANEL

DATE: 05-22-2018

GIRT ORIENTATION: HORIZONTAL

# OUTSIDE CORNER DETAIL

NOT TO SCALE



NOTE! GREENIRTS AND CUSTOM-PROFILED RIGID INSULATION PANELS ARE PROVIDED FOR THIS PROJECT AS THERMALLY-BROKEN, CONTINUOUS INSULATION ONLY. CUSTOMER TO PROVIDE AND INSTALL CONTINUOUS AIR/WATER AND WEATHER BARRIER SYSTEM PER SPECIFICATIONS AND MANUFACTURER'S DIRECTIONS. CONSULT SMACA AND ABAA FOR PROPER USE OF SEALANT. THIS INSTALLATION MAKES NO CLAIMS OR GUARANTEES ABOUT WEATHER TIGHTNESS, RESISTANCE OR PROTECTION.



SMARTci System

www.SMARTciSystems.com

1 (269) 355-1818

SUBSTRATE: OPEN FRAMING

CLADDING: -ACM PANEL

SIMPLE-Z SIZE: 200

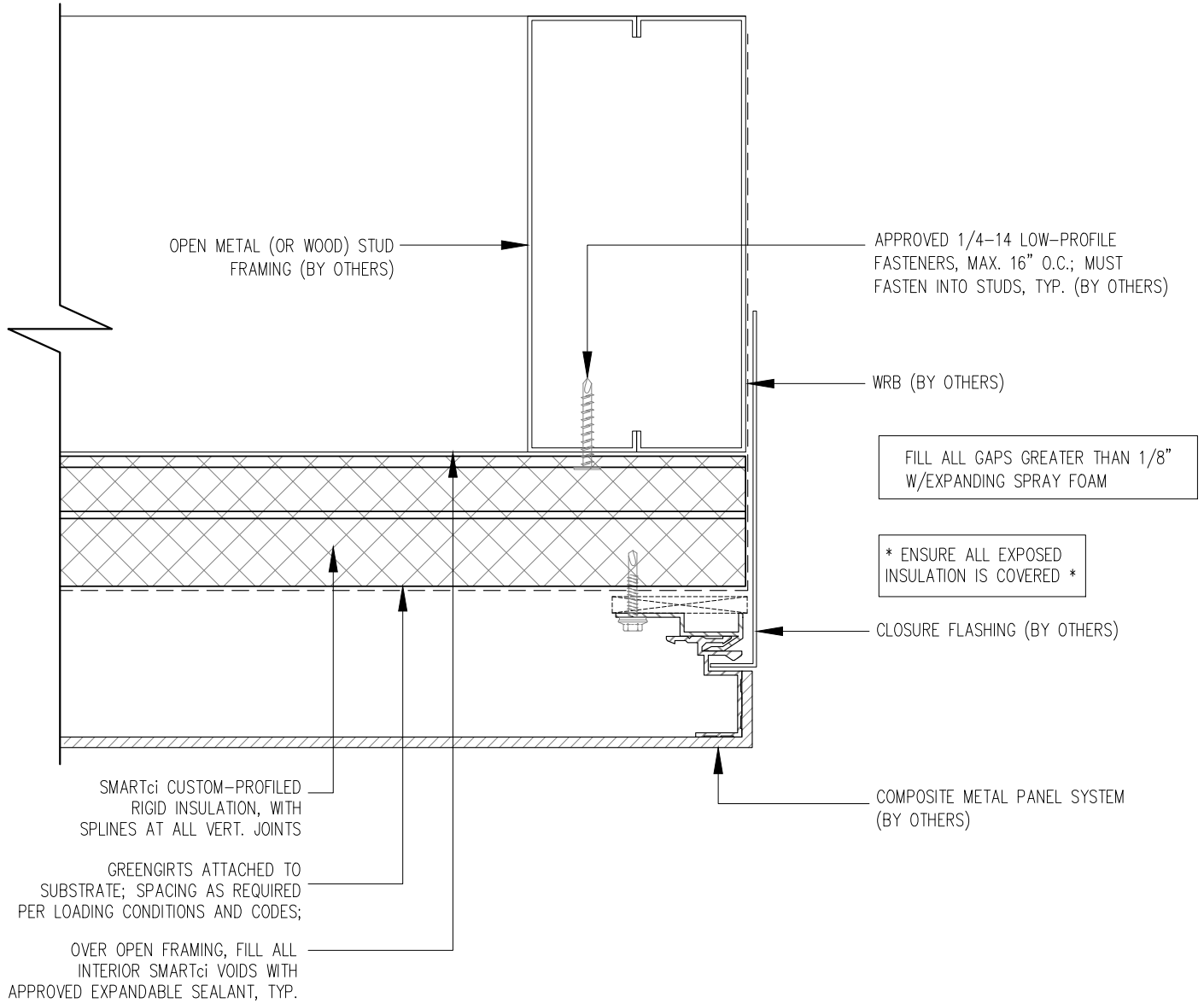
SMARTci™ RIGID INSULATION PANEL

DATE: 05-22-2018

GIRT ORIENTATION: HORIZONTAL

# HEADER DETAIL

NOT TO SCALE



NOTE! GREENGIRTS AND CUSTOM-PROFILED RIGID INSULATION PANELS ARE PROVIDED FOR THIS PROJECT AS THERMALLY-BROKEN, CONTINUOUS INSULATION ONLY. CUSTOMER TO PROVIDE AND INSTALL CONTINUOUS AIR/WATER AND WEATHER BARRIER SYSTEM PER SPECIFICATIONS AND MANUFACTURER'S DIRECTIONS. CONSULT SMACA AND ABAA FOR PROPER USE OF SEALANT. THIS INSTALLATION MAKES NO CLAIMS OR GUARANTEES ABOUT WEATHER TIGHTNESS, RESISTANCE OR PROTECTION.



SMARTci System

www.SMARTciSystems.com

1 (269) 355-1818

SUBSTRATE: OPEN FRAMING

CLADDING: -ACM PANEL

SIMPLE-Z SIZE: 200

SMARTci™ RIGID INSULATION PANEL

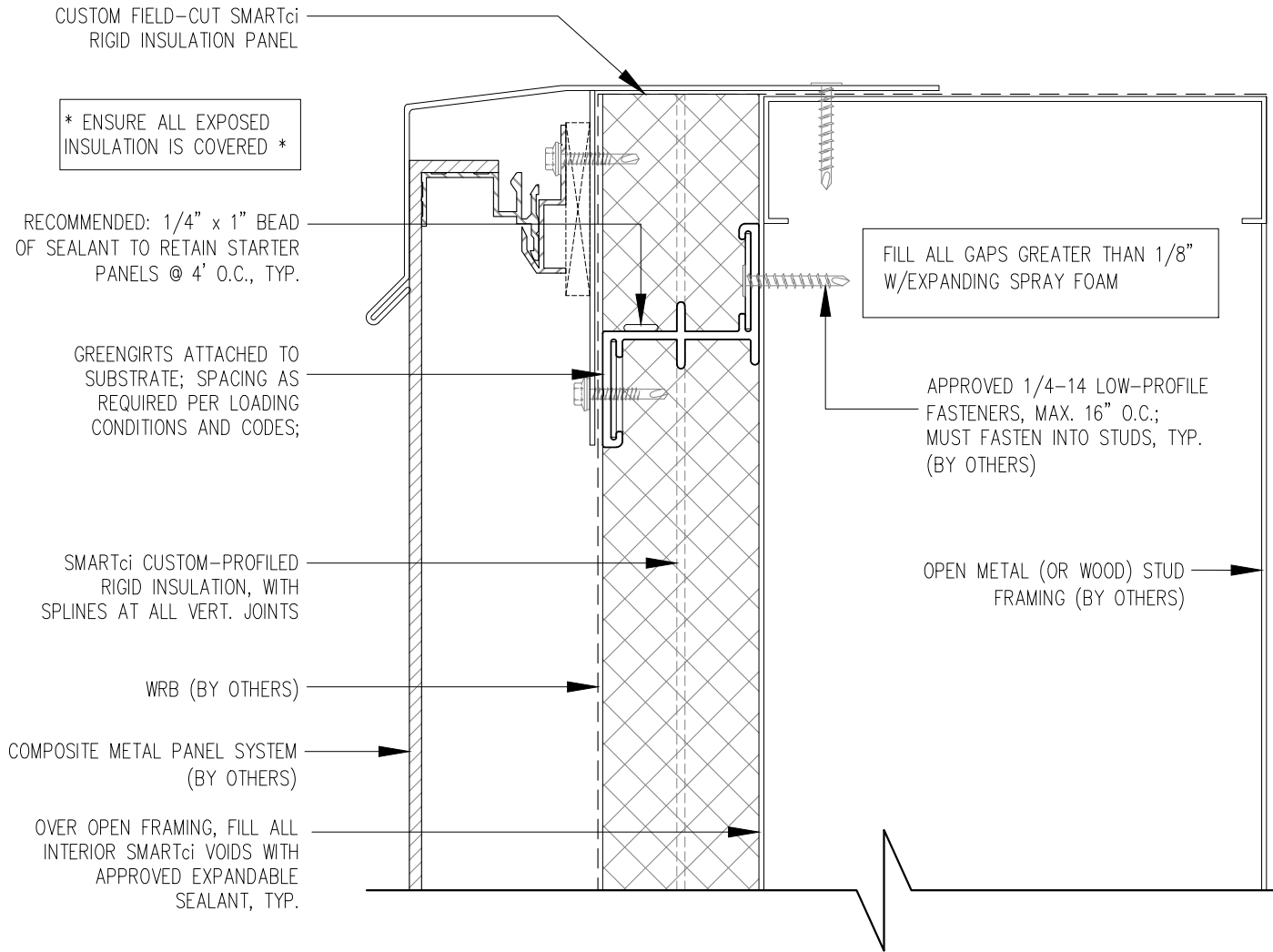
DATE: 05-22-2018

GIRT ORIENTATION: HORIZONTAL

# JAMB DETAIL

NOT TO SCALE





NOTE! GREENGIRTS AND CUSTOM-PROFILED RIGID INSULATION PANELS ARE PROVIDED FOR THIS PROJECT AS THERMALLY-BROKEN, CONTINUOUS INSULATION ONLY. CUSTOMER TO PROVIDE AND INSTALL CONTINUOUS AIR/WATER AND WEATHER BARRIER SYSTEM PER SPECIFICATIONS AND MANUFACTURER'S DIRECTIONS. CONSULT SMACA AND ABAA FOR PROPER USE OF SEALANT. THIS INSTALLATION MAKES NO CLAIMS OR GUARANTEES ABOUT WEATHER TIGHTNESS, RESISTANCE OR PROTECTION.



**SMARTci System**

[www.SMARTciSystems.com](http://www.SMARTciSystems.com)

1 (269) 355-1818

SUBSTRATE: OPEN FRAMING

CLADDING: -ACM PANEL

SIMPLE-Z SIZE: 200

SMARTci™ RIGID INSULATION PANEL

DATE: 05-22-2018

GIRT ORIENTATION: HORIZONTAL

## SILL DETAIL

NOT TO SCALE