

NOTE! GREENGIRTS AND CUSTOM-PROFILED RIGID INSULATION PANELS ARE PROVIDED FOR THIS PROJECT AS THERMALLY-BROKEN, CONTINUOUS INSULATION ONLY. CUSTOMER TO PROVIDE AND INSTALL CONTINUOUS AIR/WATER AND WEATHER BARRIER SYSTEM PER SPECIFICATIONS AND MANUFACTURER'S DIRECTIONS. CONSULT SMACNA AND ABAA FOR PROPER USE OF SEALANT. THIS INSTALLATION MAKES NO CLAIMS OR GUARANTEES ABOUT WEATHER TIGHTNESS, RESISTANCE OR PROTECTION.



SMARTci System

www.SMARTciSystems.com

1 (269) 355-1818

SUBSTRATE: OPEN FRAMING

CLADDING: -

SIMPLE-Z SIZE: 200

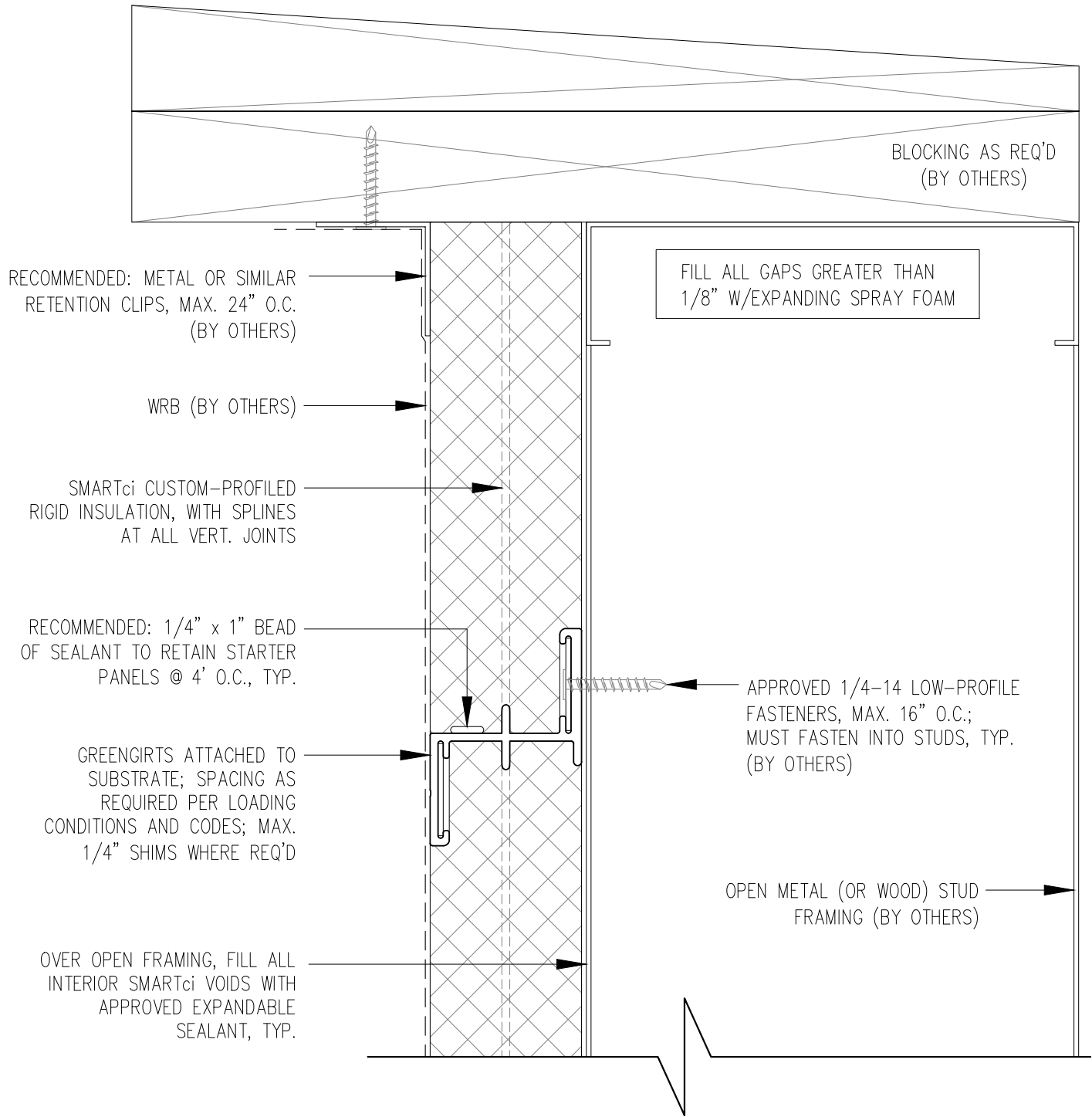
SMARTci™ RIGID INSULATION PANEL

DATE: 05-31-2018

GIRT ORIENTATION: HORIZONTAL

WALL SECTION

NOT TO SCALE



NOTE! GREENGIRTS AND CUSTOM-PROFILED RIGID INSULATION PANELS ARE PROVIDED FOR THIS PROJECT AS THERMALLY-BROKEN, CONTINUOUS INSULATION ONLY. CUSTOMER TO PROVIDE AND INSTALL CONTINUOUS AIR/WATER AND WEATHER BARRIER SYSTEM PER SPECIFICATIONS AND MANUFACTURER'S DIRECTIONS. CONSULT SMACNA AND ABAA FOR PROPER USE OF SEALANT. THIS INSTALLATION MAKES NO CLAIMS OR GUARANTEES ABOUT WEATHER TIGHTNESS, RESISTANCE OR PROTECTION.



SMARTci System

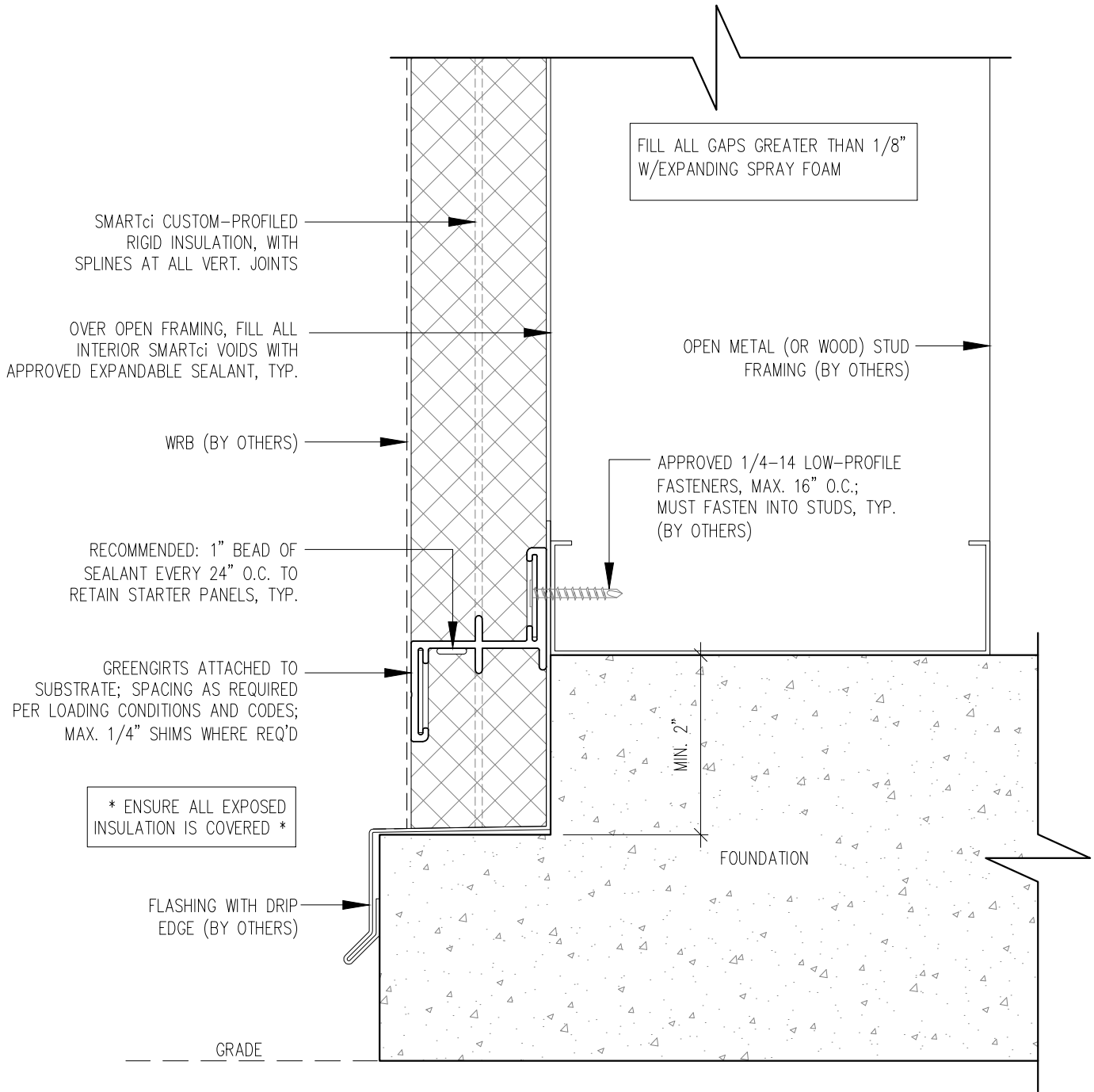
www.SMARTciSystems.com

1 (269) 355-1818

SUBSTRATE: OPEN FRAMING	SMARTci™ RIGID INSULATION PANEL
CLADDING: -	DATE: 05-31-2018
SIMPLE-Z SIZE: 200	GIRT ORIENTATION: HORIZONTAL

PARAPET DETAIL

NOT TO SCALE



NOTE! GREENGIRTS AND CUSTOM-PROFILED RIGID INSULATION PANELS ARE PROVIDED FOR THIS PROJECT AS THERMALLY-BROKEN, CONTINUOUS INSULATION ONLY. CUSTOMER TO PROVIDE AND INSTALL CONTINUOUS AIR/WATER AND WEATHER BARRIER SYSTEM PER SPECIFICATIONS AND MANUFACTURER'S DIRECTIONS. CONSULT SMACNA AND ABAA FOR PROPER USE OF SEALANT. THIS INSTALLATION MAKES NO CLAIMS OR GUARANTEES ABOUT WEATHER TIGHTNESS, RESISTANCE OR PROTECTION.



SMARTci System

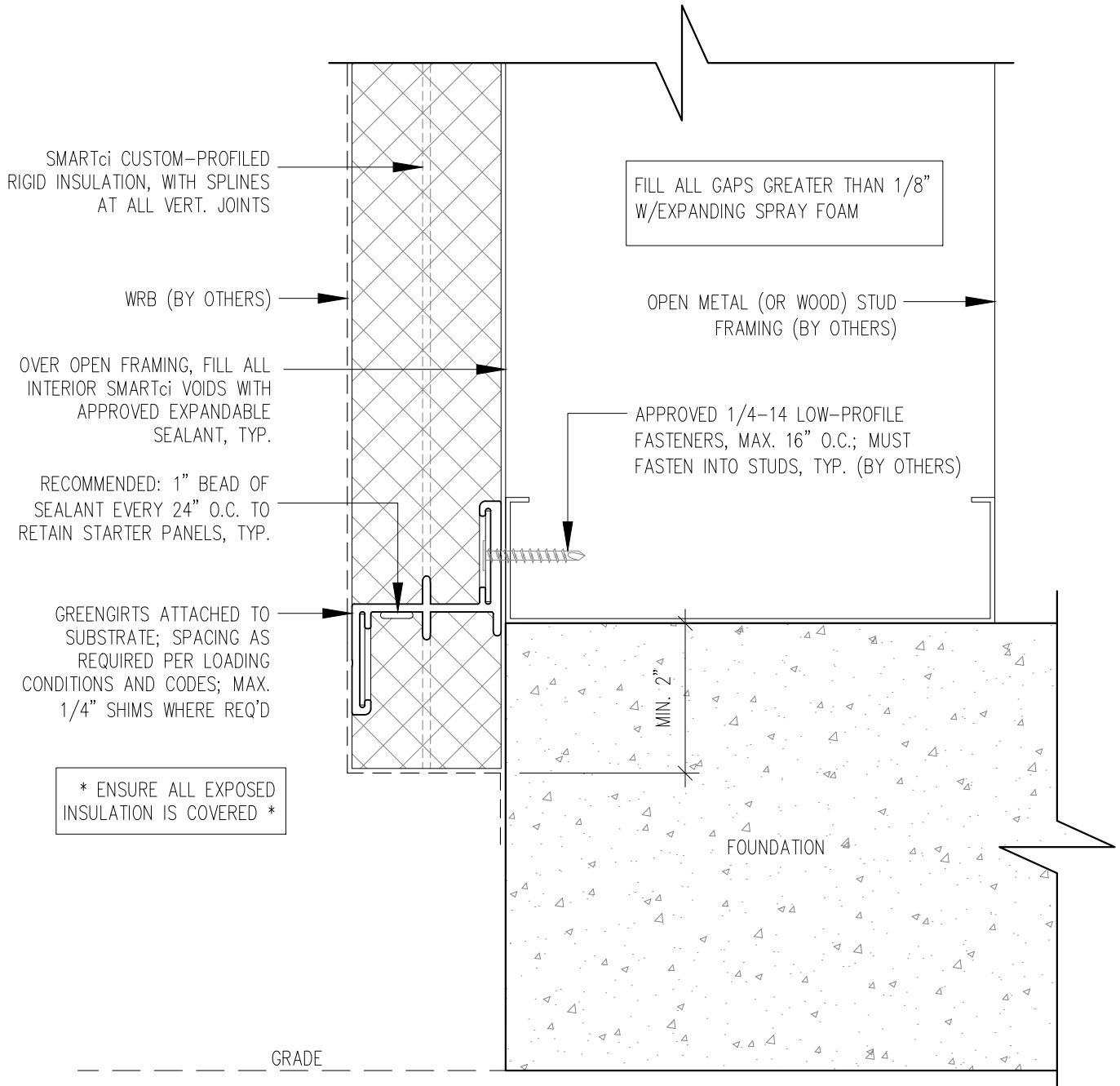
www.SMARTciSystems.com

1 (269) 355-1818

SUBSTRATE: OPEN FRAMING	SMARTci™ RIGID INSULATION PANEL
CLADDING: -	DATE: 05-31-2018
SIMPLE-Z SIZE: 200	GIRT ORIENTATION: HORIZONTAL

FOUNDATION NOTCH DETAIL

NOT TO SCALE



NOTE! GREENGIRTS AND CUSTOM-PROFILED RIGID INSULATION PANELS ARE PROVIDED FOR THIS PROJECT AS THERMALLY-BROKEN, CONTINUOUS INSULATION ONLY. CUSTOMER TO PROVIDE AND INSTALL CONTINUOUS AIR/WATER AND WEATHER BARRIER SYSTEM PER SPECIFICATIONS AND MANUFACTURER'S DIRECTIONS. CONSULT SMACNA AND ABAA FOR PROPER USE OF SEALANT. THIS INSTALLATION MAKES NO CLAIMS OR GUARANTEES ABOUT WEATHER TIGHTNESS, RESISTANCE OR PROTECTION.



SMARTci System

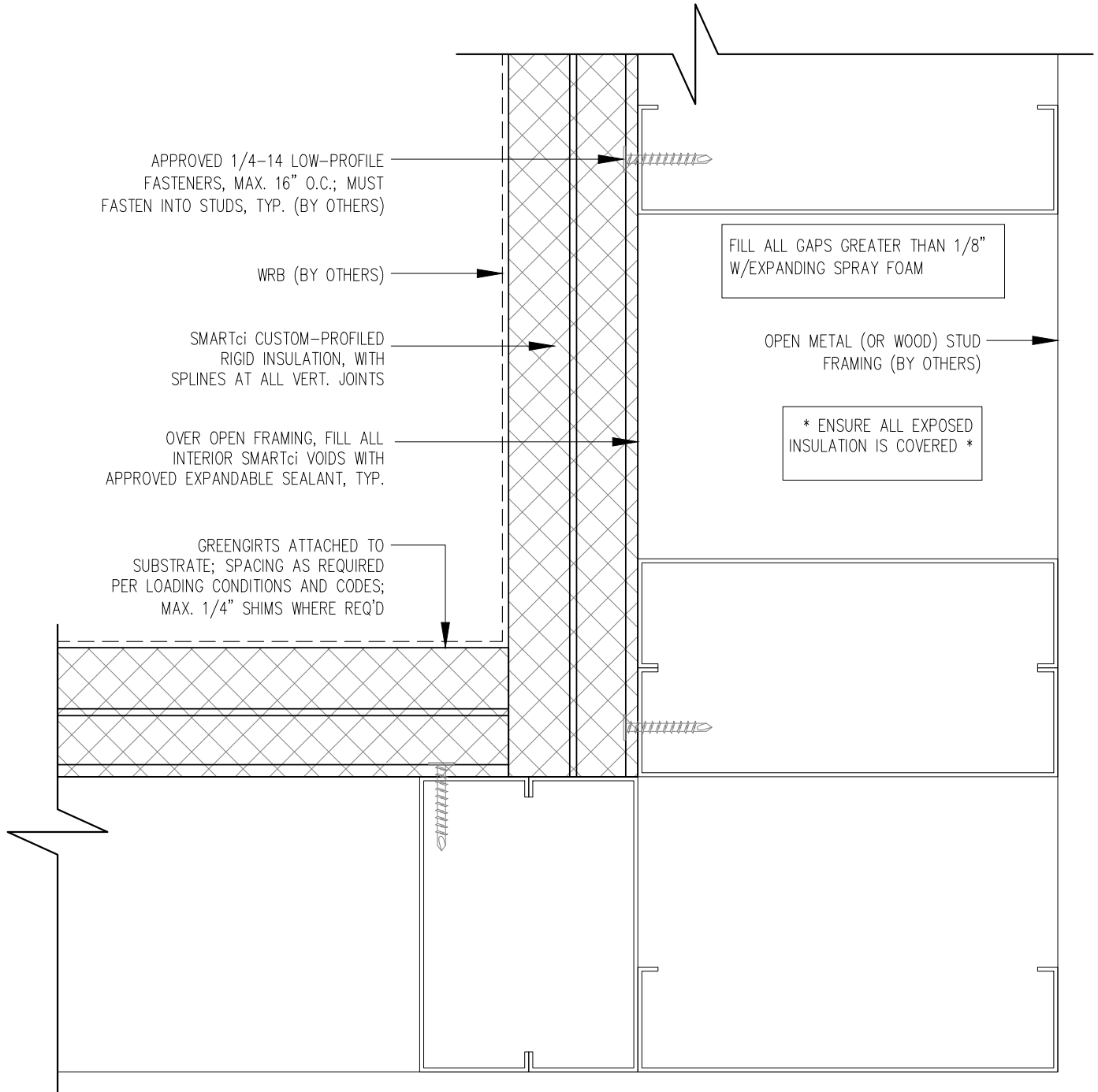
www.SMARTciSystems.com

1 (269) 355-1818

SUBSTRATE: OPEN FRAMING	SMARTci™ RIGID INSULATION PANEL
CLADDING: -	DATE: 05-31-2018
SIMPLE-Z SIZE: 200	GIRT ORIENTATION: HORIZONTAL

FOUNDATION FLUSH DETAIL

NOT TO SCALE



NOTE! GREENGIRTS AND CUSTOM-PROFILED RIGID INSULATION PANELS ARE PROVIDED FOR THIS PROJECT AS THERMALLY-BROKEN, CONTINUOUS INSULATION ONLY. CUSTOMER TO PROVIDE AND INSTALL CONTINUOUS AIR/WATER AND WEATHER BARRIER SYSTEM PER SPECIFICATIONS AND MANUFACTURER'S DIRECTIONS. CONSULT SMACNA AND ABAA FOR PROPER USE OF SEALANT. THIS INSTALLATION MAKES NO CLAIMS OR GUARANTEES ABOUT WEATHER TIGHTNESS, RESISTANCE OR PROTECTION.



SMARTci System

www.SMARTciSystems.com

1 (269) 355-1818

SUBSTRATE: OPEN FRAMING

CLADDING: -

SIMPLE-Z SIZE: 200

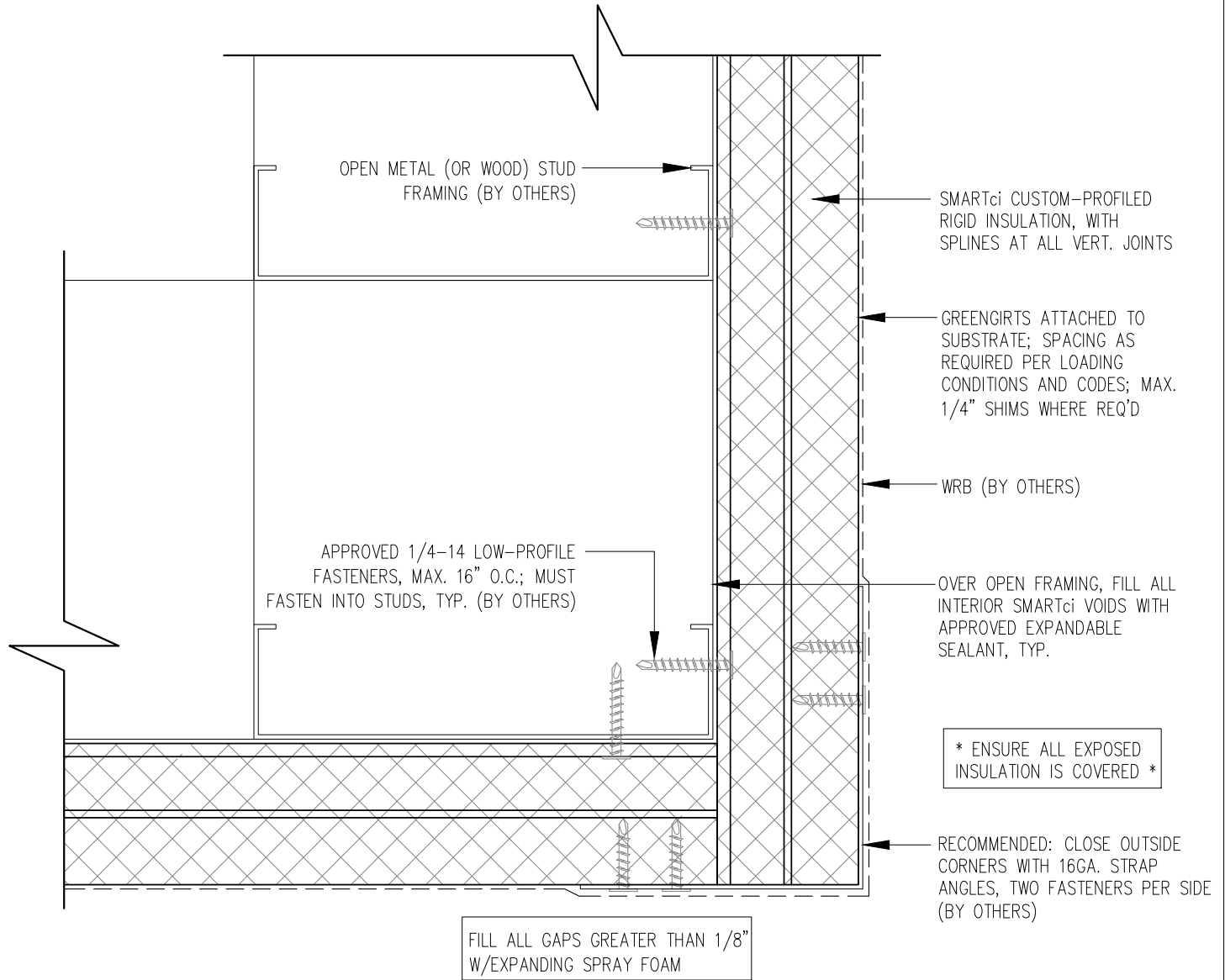
SMARTci™ RIGID INSULATION PANEL

DATE: 05-31-2018

GIRT ORIENTATION: HORIZONTAL

INSIDE CORNER DETAIL

NOT TO SCALE



NOTE! GREENGIRTS AND CUSTOM-PROFILED RIGID INSULATION PANELS ARE PROVIDED FOR THIS PROJECT AS THERMALLY-BROKEN, CONTINUOUS INSULATION ONLY. CUSTOMER TO PROVIDE AND INSTALL CONTINUOUS AIR/WATER AND WEATHER BARRIER SYSTEM PER SPECIFICATIONS AND MANUFACTURER'S DIRECTIONS. CONSULT SMACNA AND ABAA FOR PROPER USE OF SEALANT. THIS INSTALLATION MAKES NO CLAIMS OR GUARANTEES ABOUT WEATHER TIGHTNESS, RESISTANCE OR PROTECTION.



SMARTci System

www.SMARTciSystems.com

1 (269) 355-1818

SUBSTRATE: OPEN FRAMING

CLADDING: -

SIMPLE-Z SIZE: 200

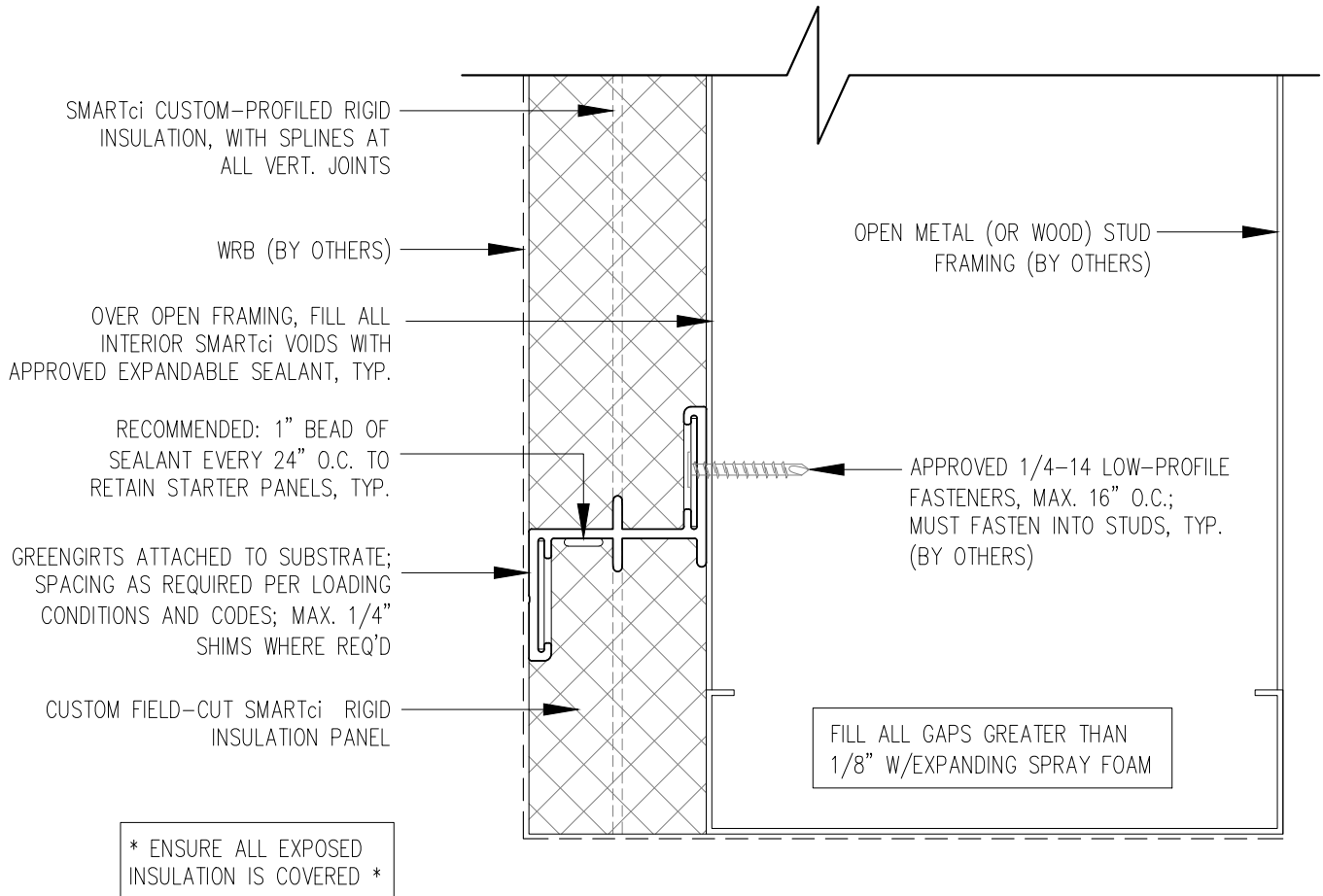
SMARTci™ RIGID INSULATION PANEL

DATE: 05-31-2018

GIRT ORIENTATION: HORIZONTAL

OUTSIDE CORNER DETAIL

NOT TO SCALE



NOTE! GREENGIRTS AND CUSTOM-PROFILED RIGID INSULATION PANELS ARE PROVIDED FOR THIS PROJECT AS THERMALLY-BROKEN, CONTINUOUS INSULATION ONLY. CUSTOMER TO PROVIDE AND INSTALL CONTINUOUS AIR/WATER AND WEATHER BARRIER SYSTEM PER SPECIFICATIONS AND MANUFACTURER'S DIRECTIONS. CONSULT SMACNA AND ABAA FOR PROPER USE OF SEALANT. THIS INSTALLATION MAKES NO CLAIMS OR GUARANTEES ABOUT WEATHER TIGHTNESS, RESISTANCE OR PROTECTION.



SMARTci System

www.SMARTciSystems.com

1 (269) 355-1818

SUBSTRATE: OPEN FRAMING

CLADDING: -

SIMPLE-Z SIZE: 200

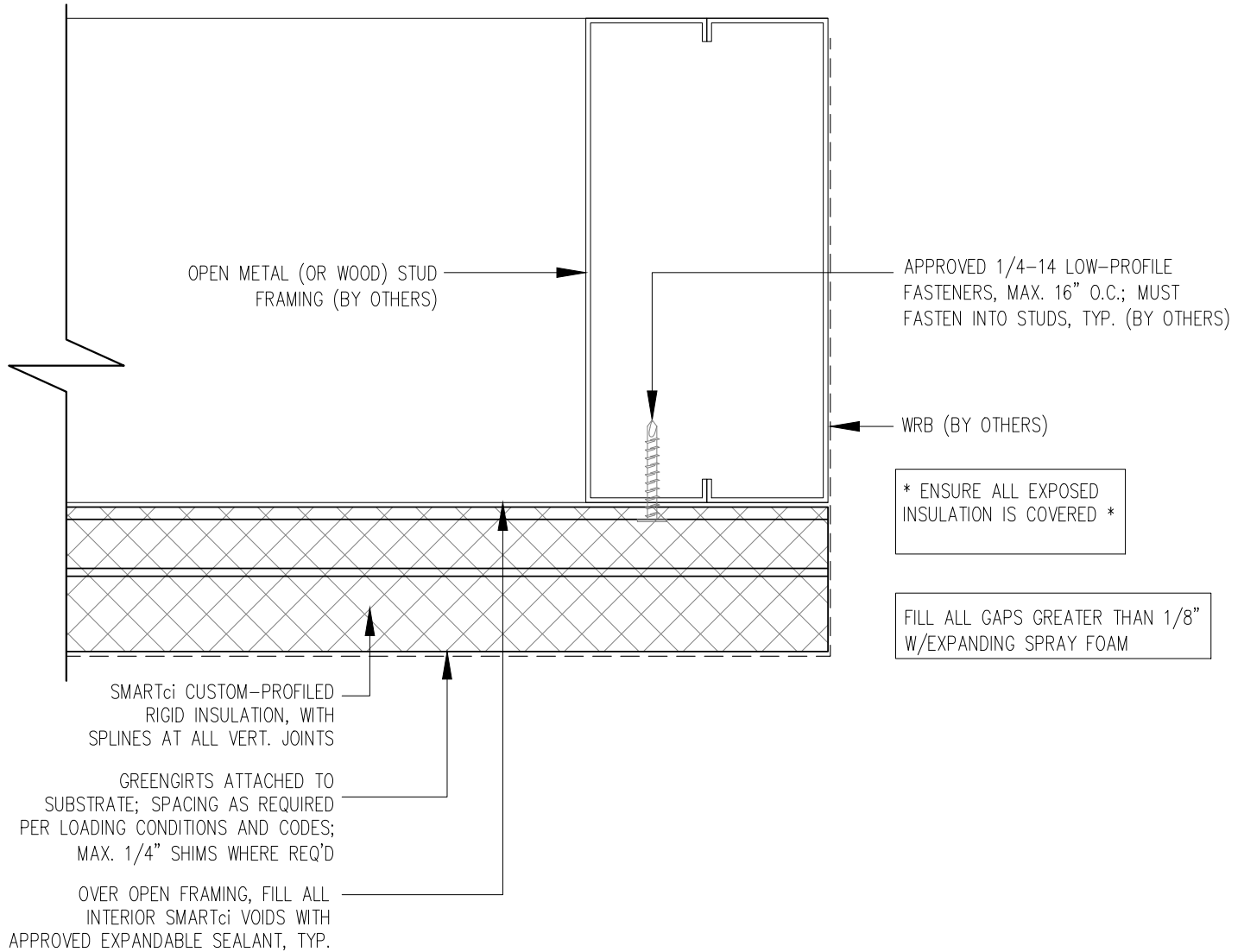
SMARTci™ RIGID INSULATION PANEL

DATE: 05-31-2018

GIRT ORIENTATION: HORIZONTAL

HEADER DETAIL

NOT TO SCALE



NOTE! GREENGIRTS AND CUSTOM-PROFILED RIGID INSULATION PANELS ARE PROVIDED FOR THIS PROJECT AS THERMALLY-BROKEN, CONTINUOUS INSULATION ONLY. CUSTOMER TO PROVIDE AND INSTALL CONTINUOUS AIR/WATER AND WEATHER BARRIER SYSTEM PER SPECIFICATIONS AND MANUFACTURER'S DIRECTIONS. CONSULT SMACNA AND ABAA FOR PROPER USE OF SEALANT. THIS INSTALLATION MAKES NO CLAIMS OR GUARANTEES ABOUT WEATHER TIGHTNESS, RESISTANCE OR PROTECTION.



SMARTci System

www.SMARTciSystems.com

1 (269) 355-1818

SUBSTRATE: OPEN FRAMING

CLADDING: -

SIMPLE-Z SIZE: 200

SMARTci™ RIGID INSULATION PANEL

DATE: 05-31-2018

GIRT ORIENTATION: HORIZONTAL

JAMB DETAIL

NOT TO SCALE



* ENSURE ALL EXPOSED INSULATION IS COVERED *

CUSTOM FIELD-CUT SMARTci RIGID INSULATION PANEL

RECOMMENDED: 1/4" x 1" BEAD OF SEALANT TO RETAIN STARTER PANELS @ 4' O.C., TYP.

GREENGIRTS ATTACHED TO SUBSTRATE; SPACING AS REQUIRED PER LOADING CONDITIONS AND CODES; MAX. 1/4" SHIMS WHERE REQ'D

SMARTci CUSTOM-PROFILED RIGID INSULATION, WITH SPLINES AT ALL VERT. JOINTS

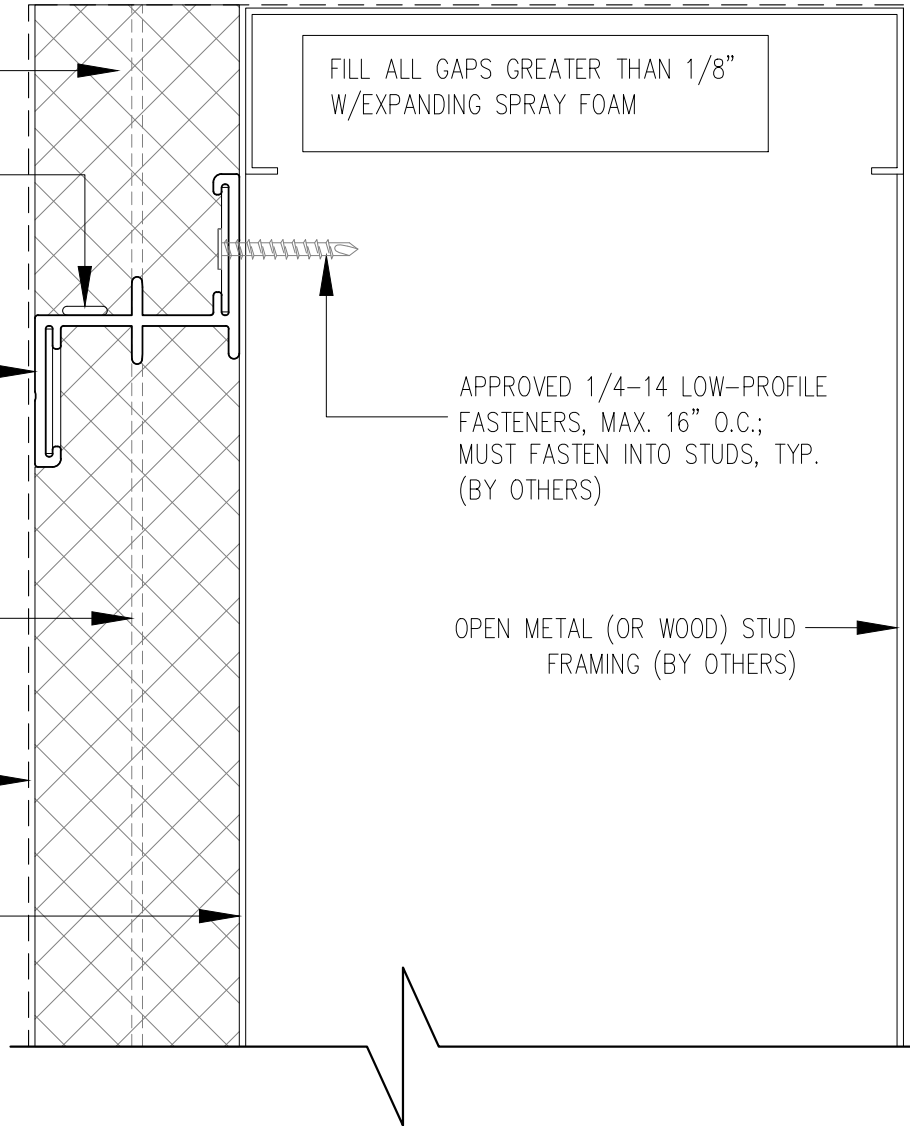
WRB (BY OTHERS)

OVER OPEN FRAMING, FILL ALL INTERIOR SMARTci VOIDS WITH APPROVED EXPANDABLE SEALANT, TYP.

FILL ALL GAPS GREATER THAN 1/8" W/EXPANDING SPRAY FOAM

APPROVED 1/4-14 LOW-PROFILE FASTENERS, MAX. 16" O.C.; MUST FASTEN INTO STUDS, TYP. (BY OTHERS)

OPEN METAL (OR WOOD) STUD FRAMING (BY OTHERS)



NOTE! GREENGIRTS AND CUSTOM-PROFILED RIGID INSULATION PANELS ARE PROVIDED FOR THIS PROJECT AS THERMALLY-BROKEN, CONTINUOUS INSULATION ONLY. CUSTOMER TO PROVIDE AND INSTALL CONTINUOUS AIR/WATER AND WEATHER BARRIER SYSTEM PER SPECIFICATIONS AND MANUFACTURER'S DIRECTIONS. CONSULT SMACNA AND ABAA FOR PROPER USE OF SEALANT. THIS INSTALLATION MAKES NO CLAIMS OR GUARANTEES ABOUT WEATHER TIGHTNESS, RESISTANCE OR PROTECTION.



SMARTci System

www.SMARTciSystems.com

1 (269) 355-1818

SUBSTRATE: OPEN FRAMING

CLADDING: -

SIMPLE-Z SIZE: 200

SMARTci™ RIGID INSULATION PANEL

DATE: 05-31-2018

GIRT ORIENTATION: HORIZONTAL

SILL DETAIL

NOT TO SCALE