

SMARTci PLUS SYSTEM

SUBSTRATE MASONRY

SMARTci™ RIGID INSULATION PANEL

CLADDING:

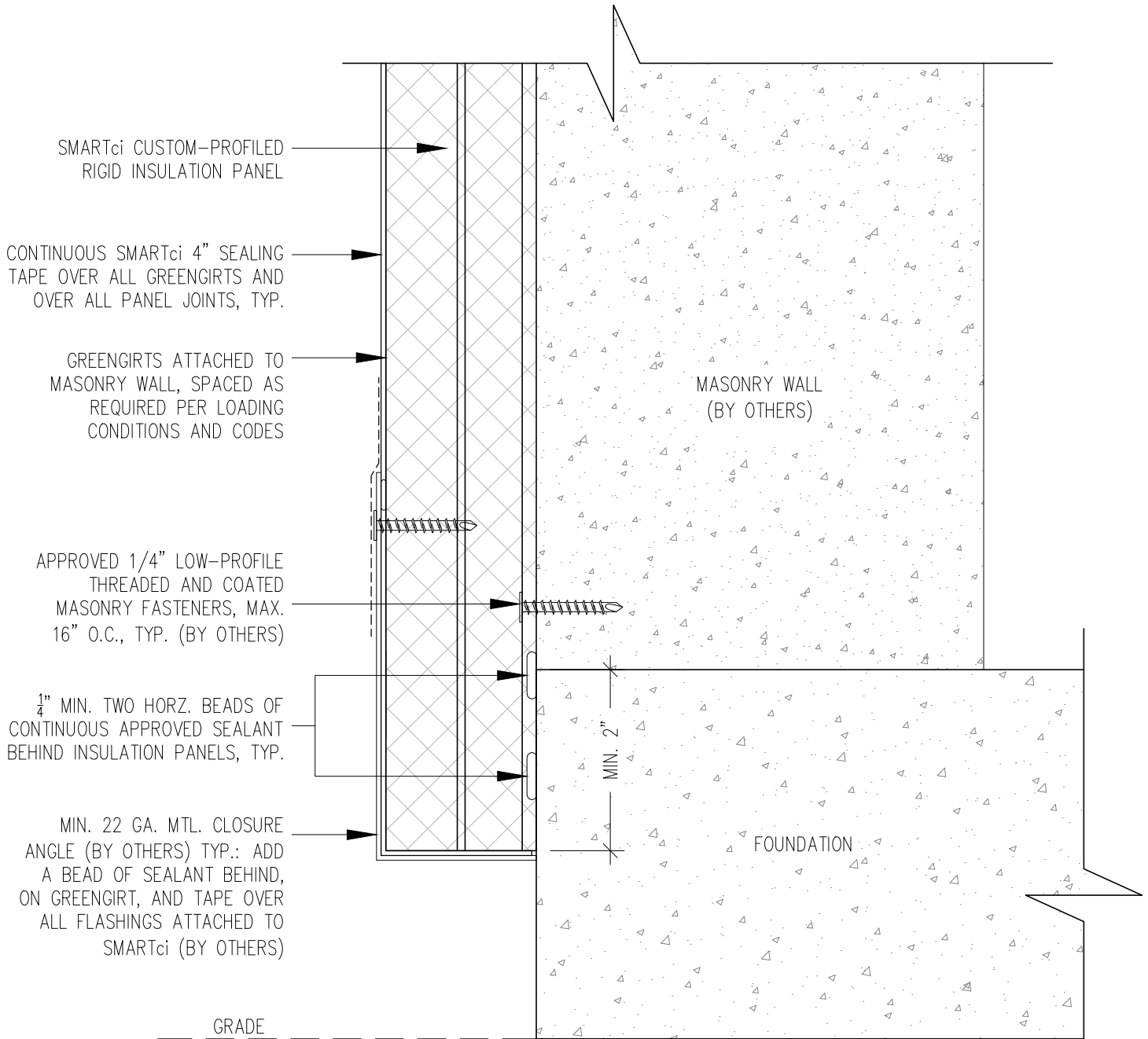
DATE: 4-21-2016

SIMPLE-Z SIZE: 200

GIRT ORIENTATION: VERTICAL

# FOUNDATION NOTCH DETAIL

NOT TO SCALE



SMARTci PLUS SYSTEM

SUBSTRATE: MASONRY

SMARTci™ RIGID INSULATION PANEL

CLADDING:

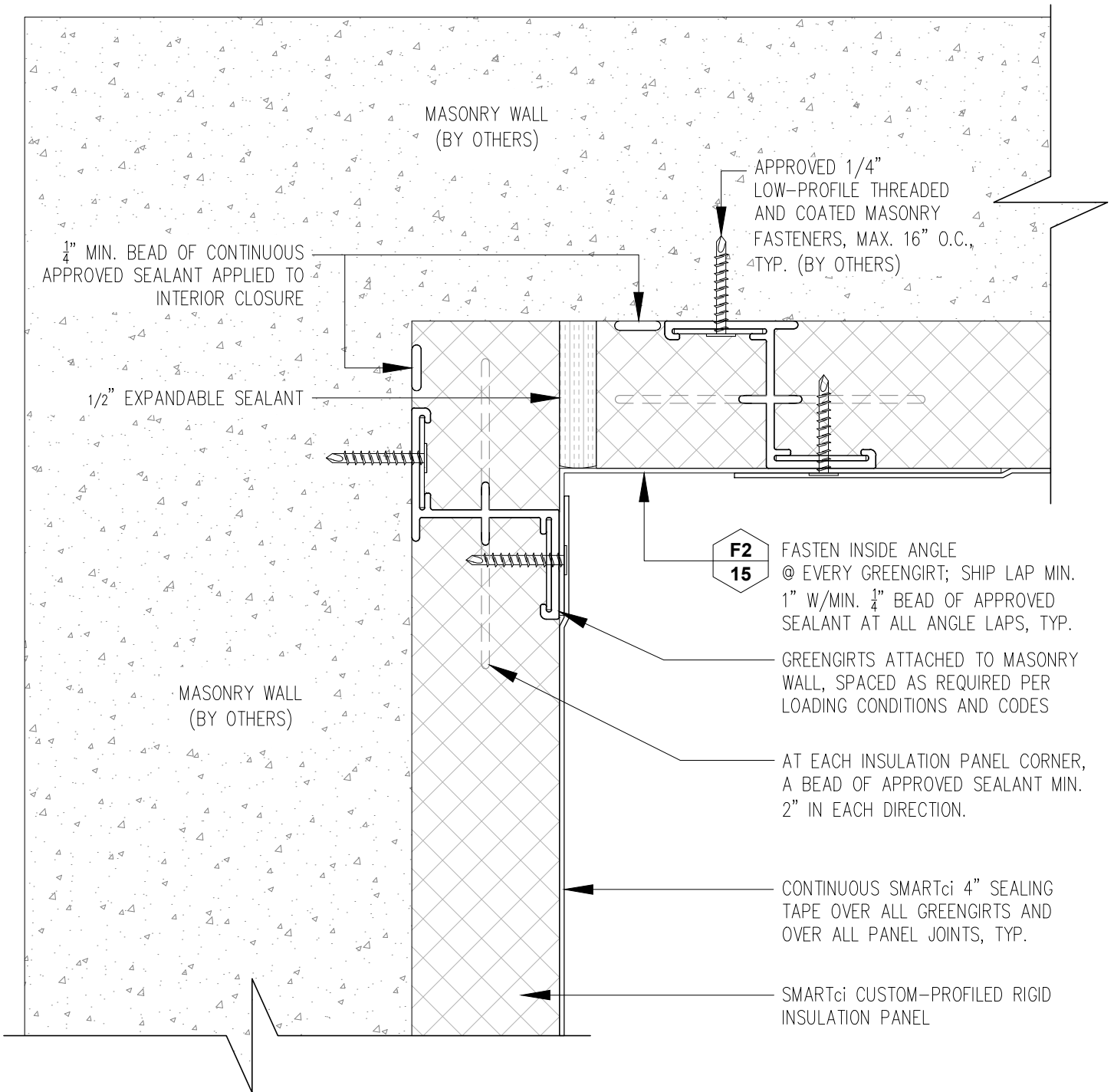
DATE: 4-21-2016

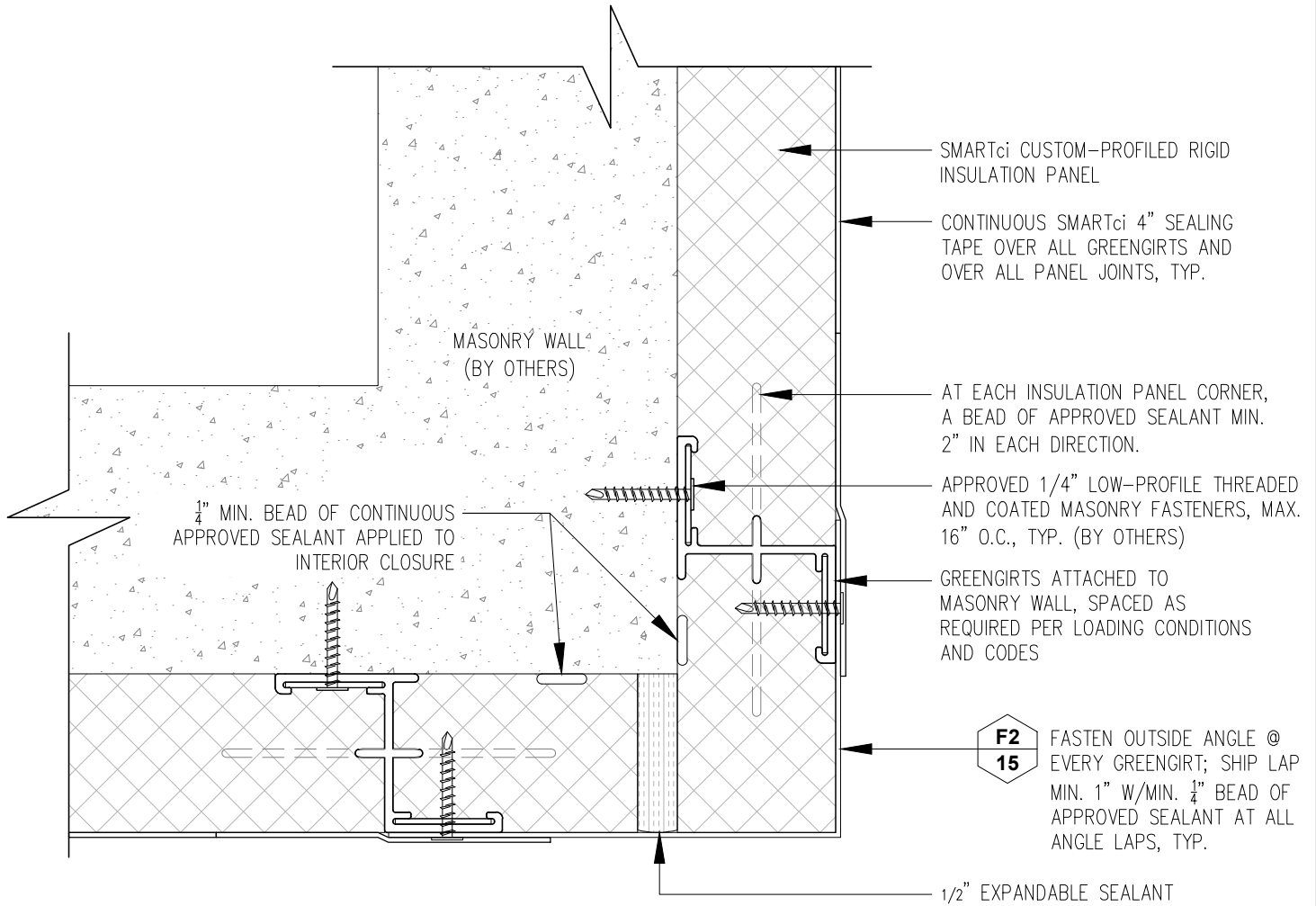
SIMPLE-Z SIZE: 200

GIRT ORIENTATION: VERTICAL

# FOUNDATION FLUSH DETAIL

NOT TO SCALE





SMARTci PLUS SYSTEM

SUBSTRATE: MASONRY

SMARTci™ RIGID INSULATION PANEL

CLADDING:

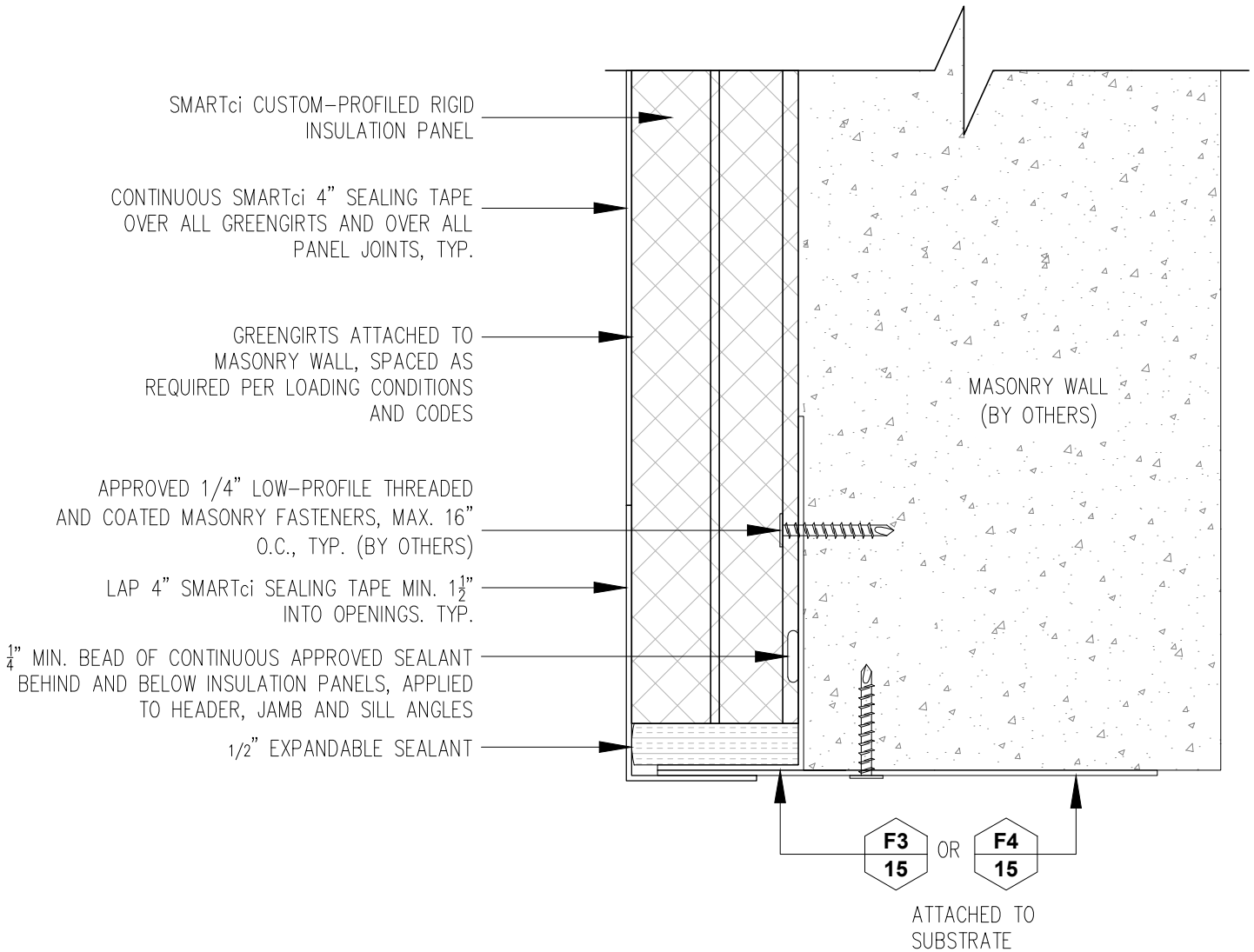
DATE: 4-21-2016

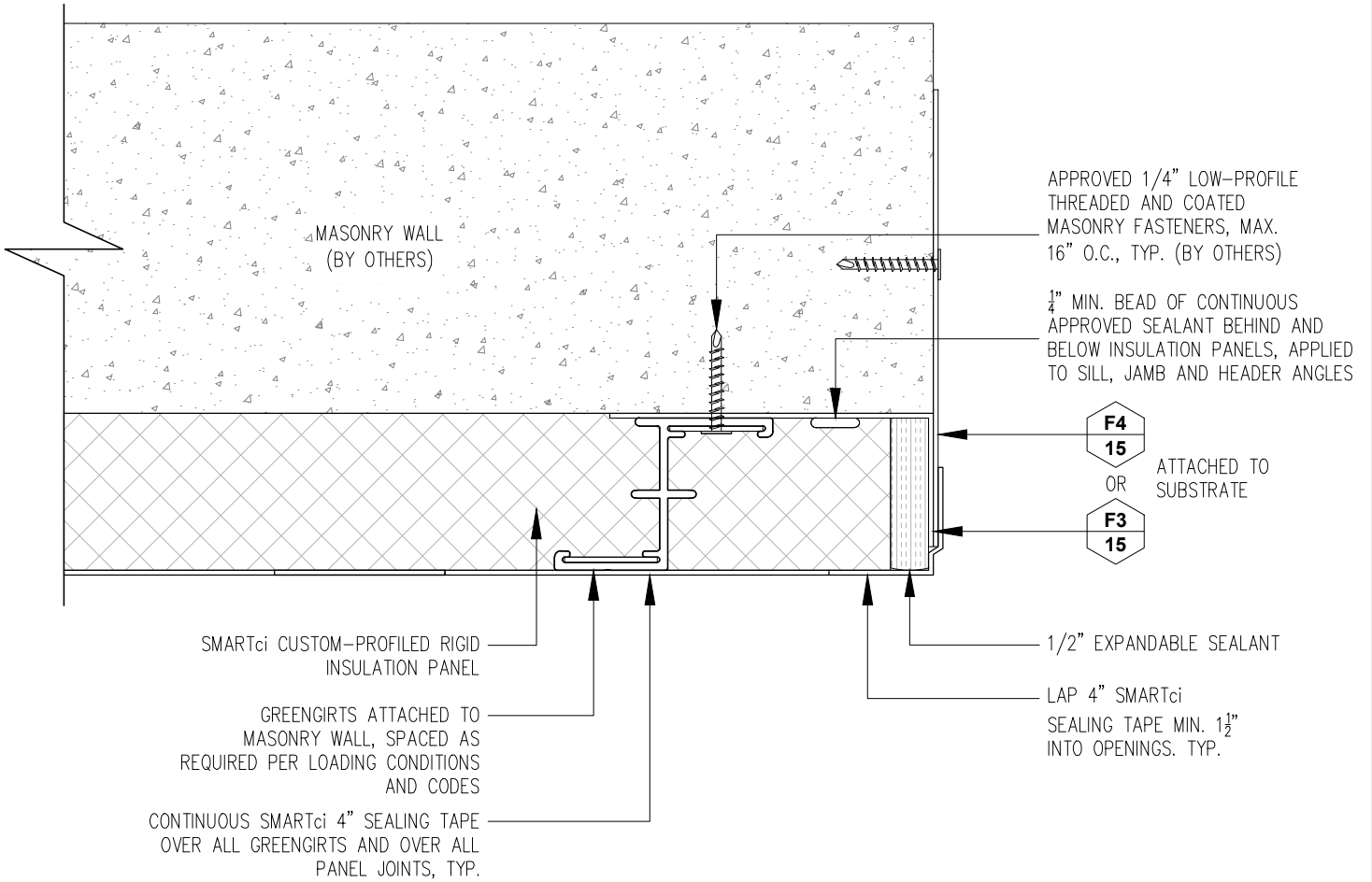
SIMPLE-Z SIZE: 200

GIRT ORIENTATION: VERTICAL

# OUTSIDE CORNER DETAIL

NOT TO SCALE





SMARTci PLUS SYSTEM

SUBSTRATE: MASONRY

SMARTci™ RIGID INSULATION PANEL

CLADDING:

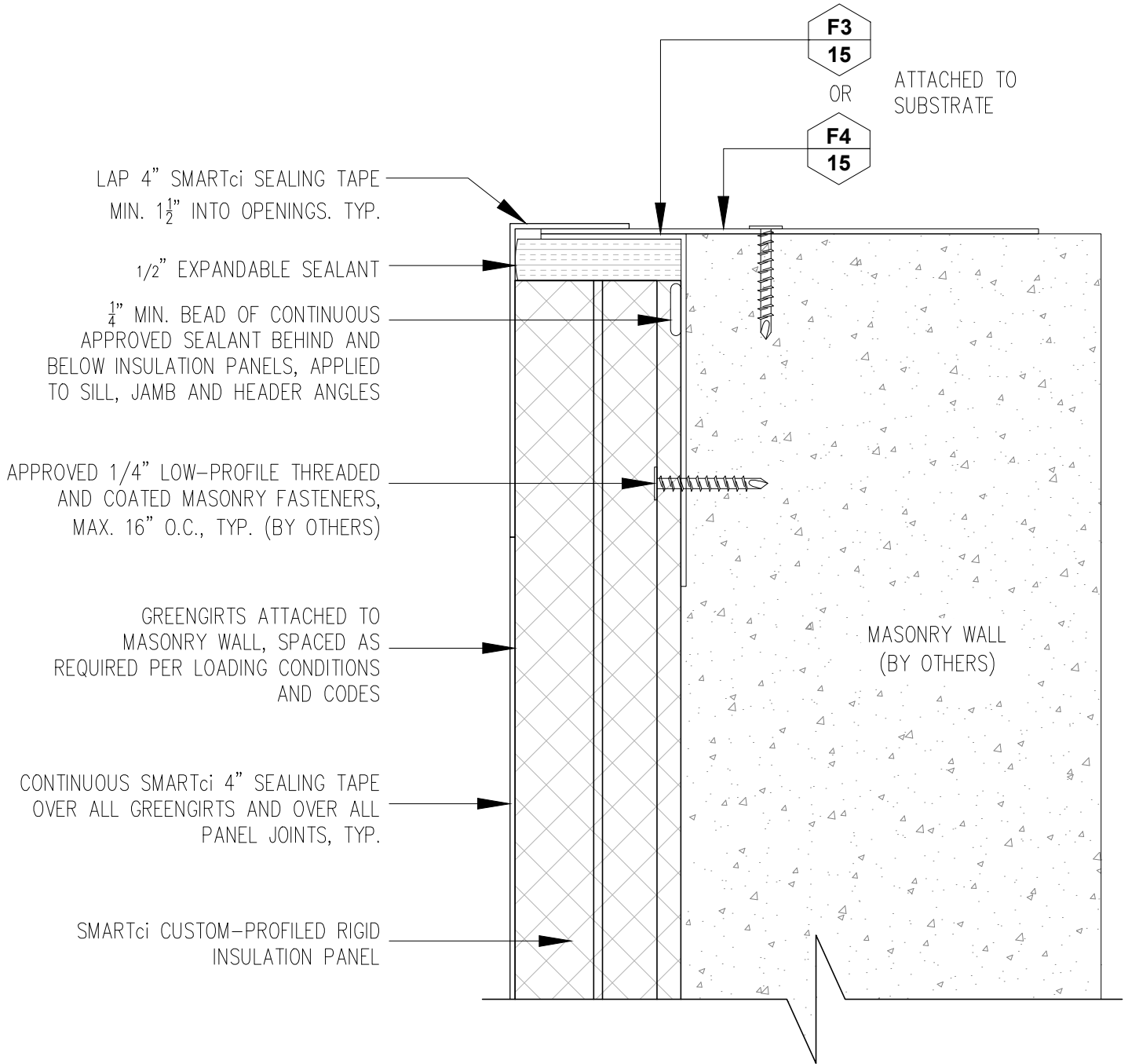
DATE: 4-21-2016

SIMPLE-Z SIZE: 200

GIRT ORIENTATION: VERTICAL

# JAMB DETAIL

NOT TO SCALE



**SMARTci PLUS SYSTEM**

SUBSTRATE: MASONRY

CLADDING:

SIMPLE-Z SIZE: 200

SMARTci™ RIGID INSULATION PANEL

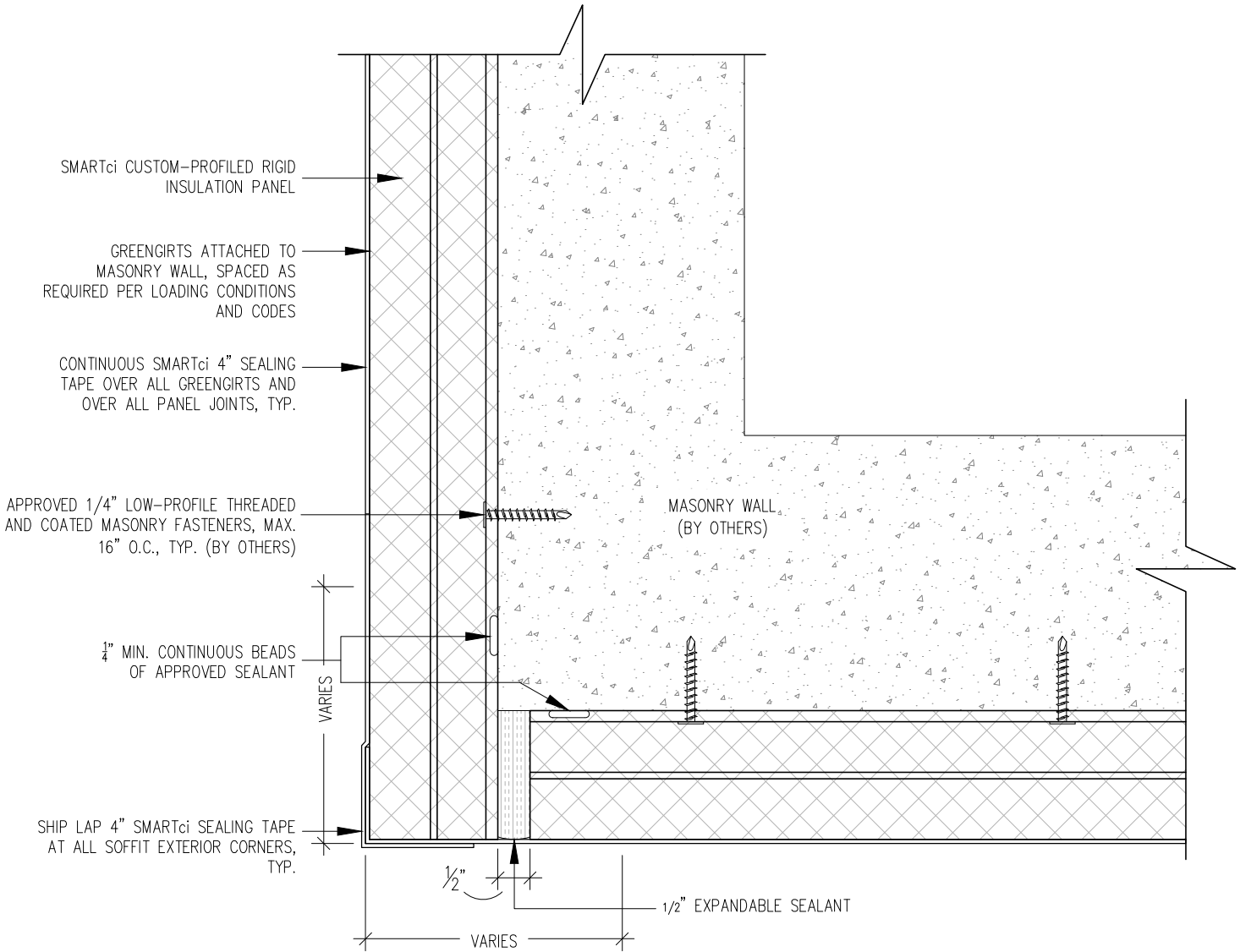
DATE: 4-21-2016

GIRT ORIENTATION: VERTICAL

## SILL DETAIL

NOT TO SCALE





SMARTci PLUS SYSTEM

SUBSTRATE: MASONRY

SMARTci™ RIGID INSULATION PANEL

CLADDING:

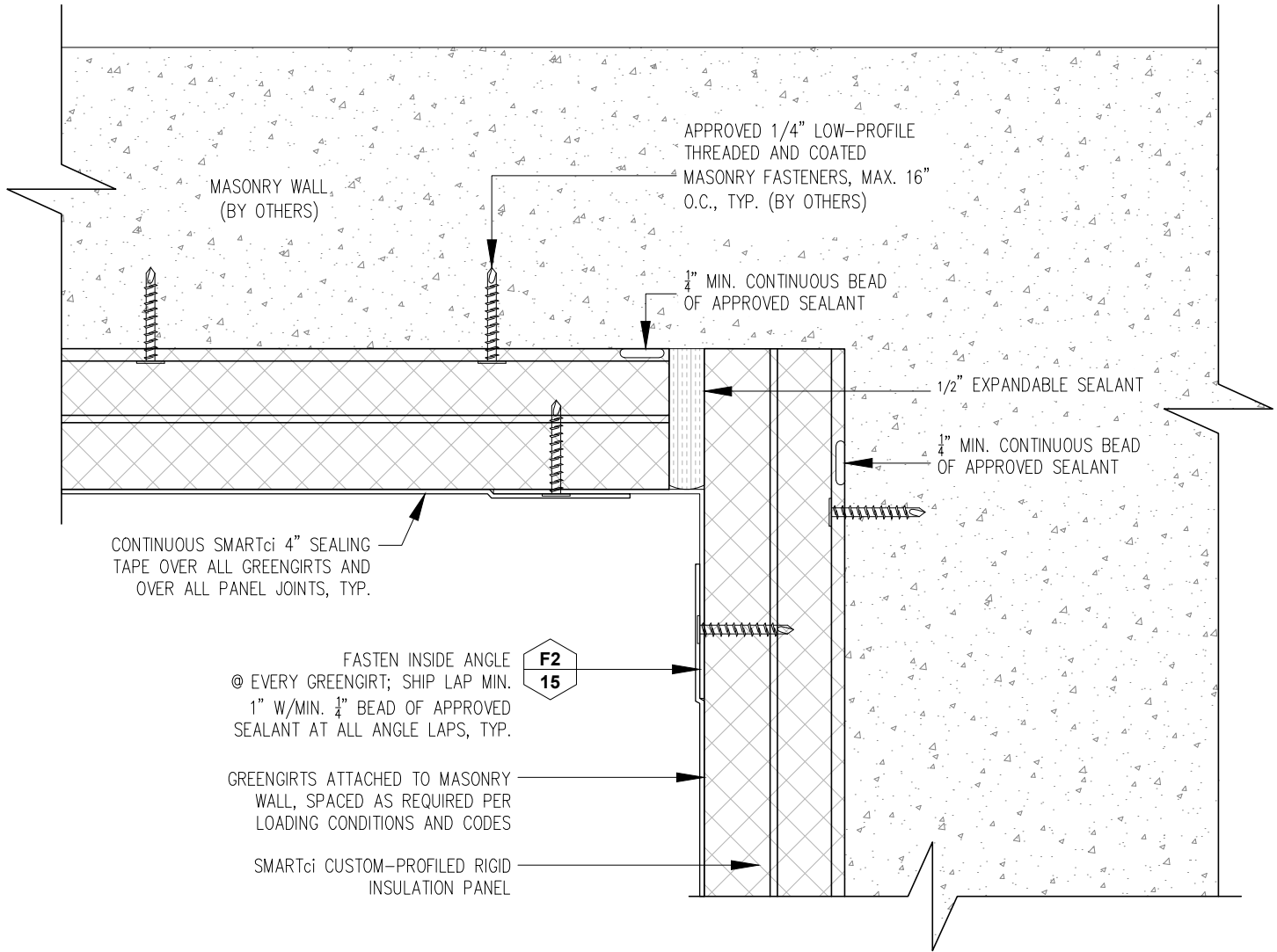
DATE: 4-21-2016

SIMPLE-Z SIZE: 200

GIRT ORIENTATION: VERTICAL

# OUTSIDE SOFFIT DETAIL-1

NOT TO SCALE



**SMARTci PLUS SYSTEM**

SUBSTRATE: MASONRY

CLADDING:

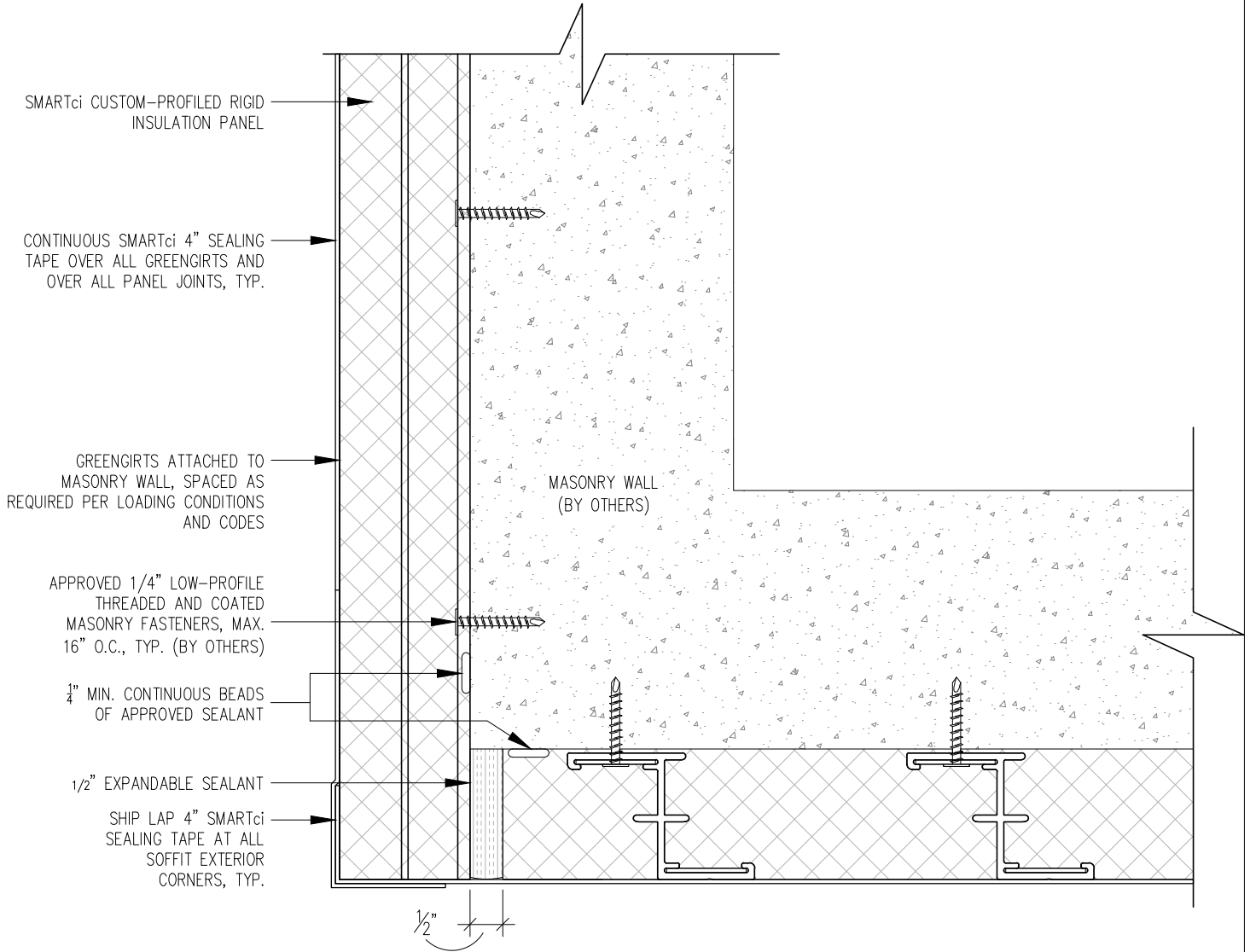
SIMPLE-Z SIZE: 200

SMARTci™ RIGID INSULATION PANEL

DATE: 4-21-2016

GIRT ORIENTATION: VERTICAL

# INSIDE SOFFIT DETAIL-1



**SMARTci PLUS SYSTEM**

SUBSTRATE: MASONRY

CLADDING:

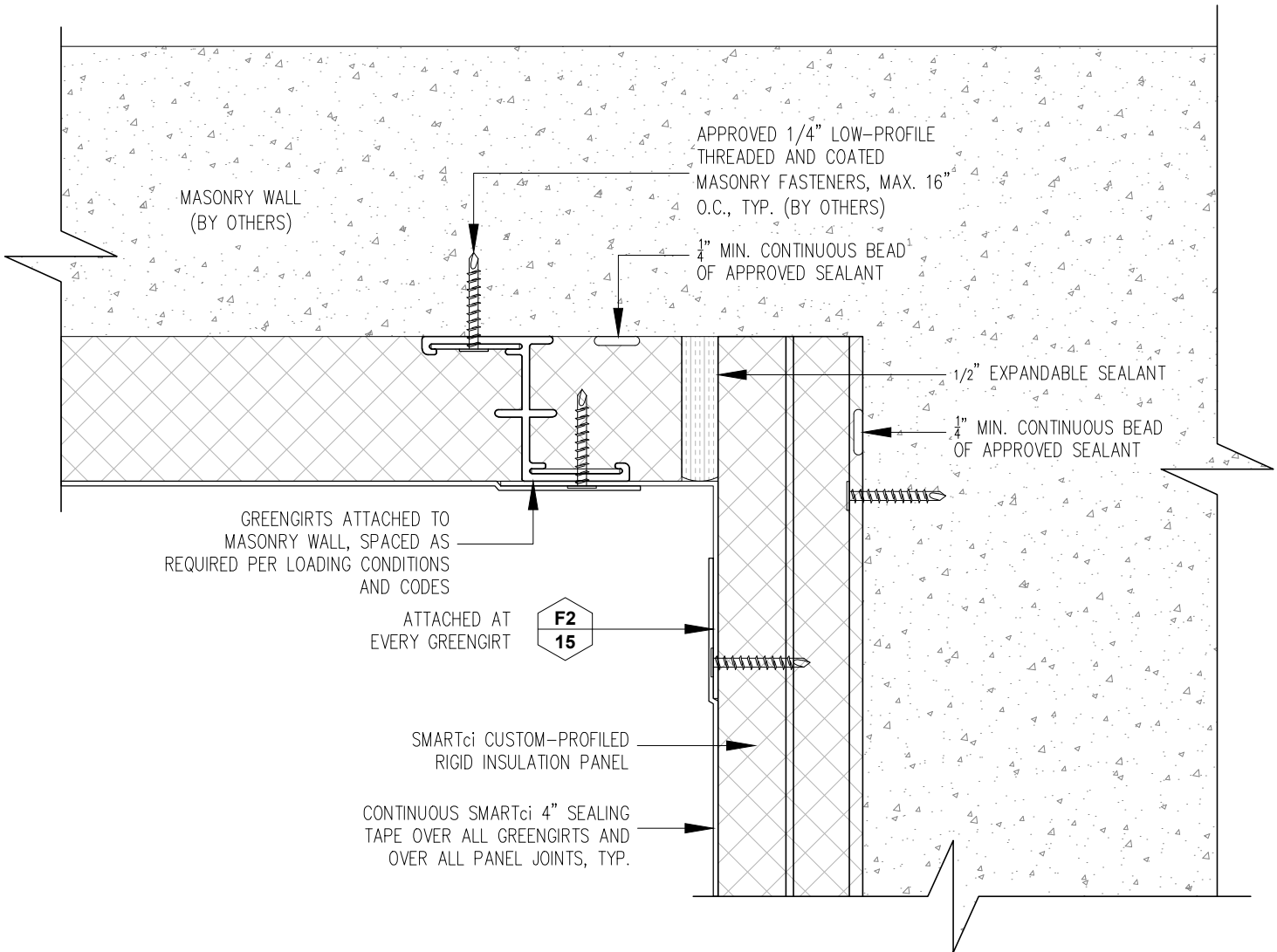
SIMPLE-Z SIZE: 200

SMARTci™ RIGID INSULATION PANEL

DATE: 4-21-2016

GIRT ORIENTATION: VERTICAL

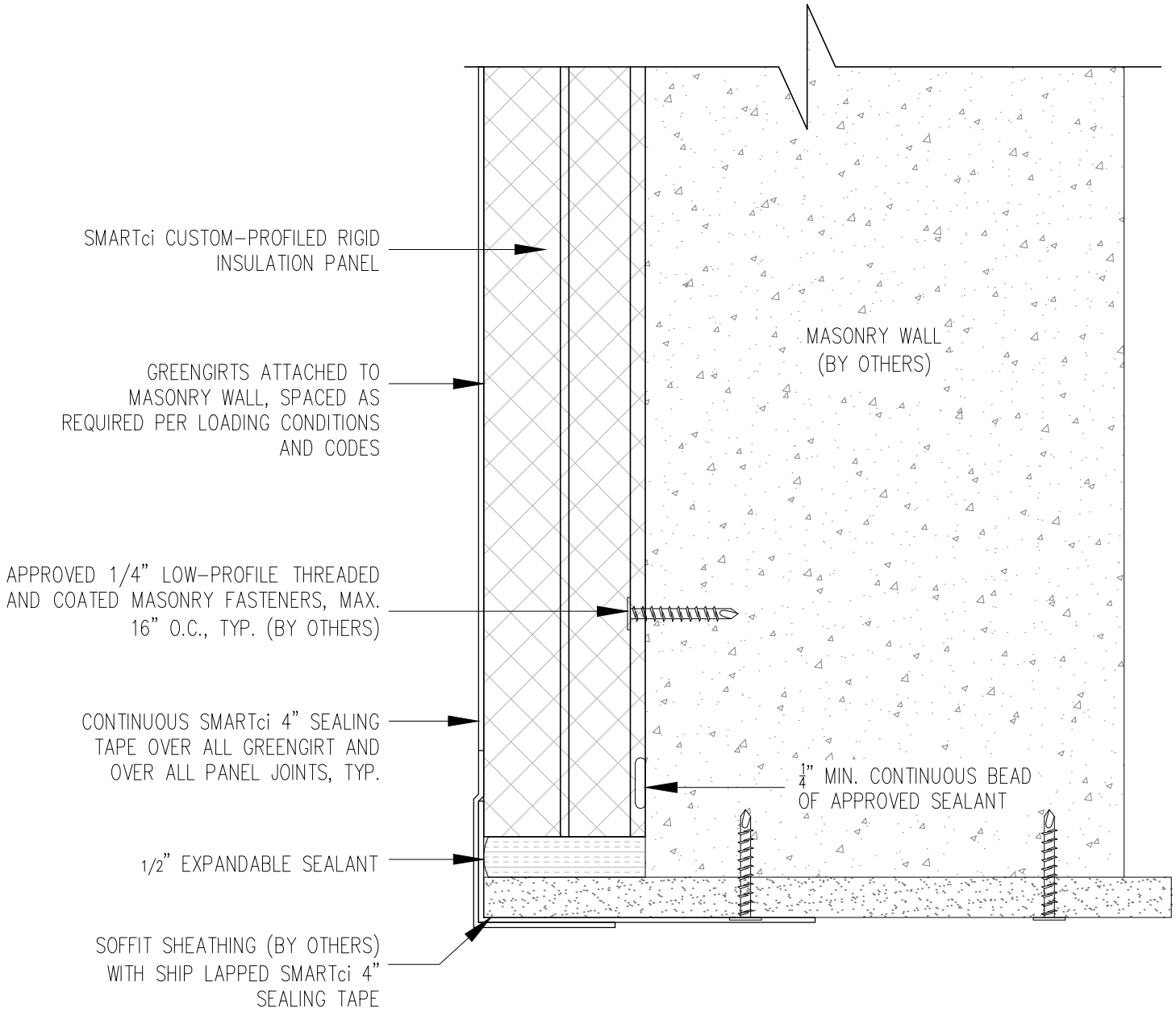
# OUTSIDE SOFFIT DETAIL-2



**SMARTci PLUS SYSTEM**

SUBSTRATE: MASONRY	SMARTci™ RIGID INSULATION PANEL
CLADDING:	DATE: 4-21-2016
SIMPLE-Z SIZE: 200	GIRT ORIENTATION: VERTICAL

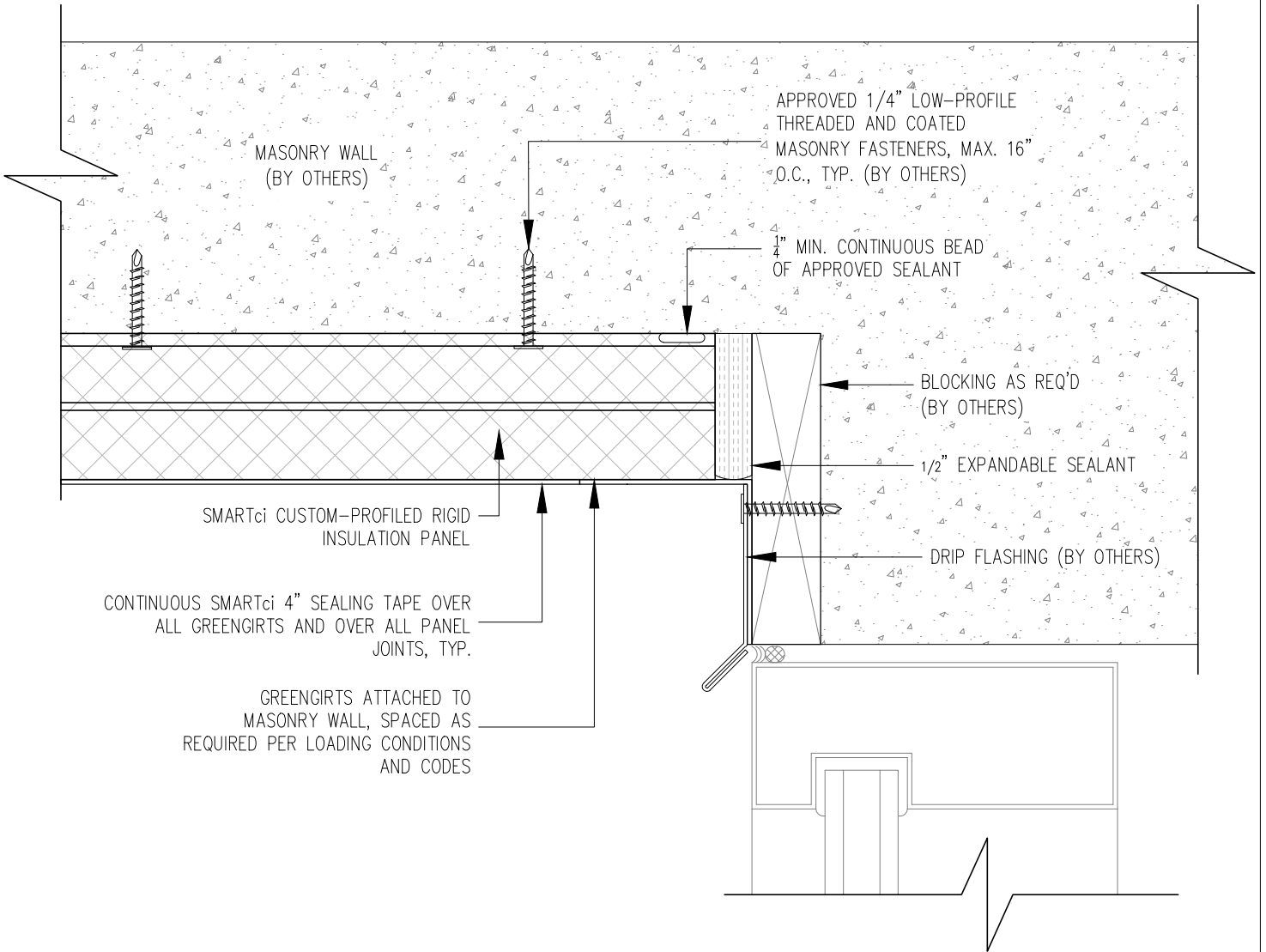
# INSIDE SOFFIT DETAIL-2



SMARTci PLUS SYSTEM

SUBSTRATE: MASONRY	SMARTci™ RIGID INSULATION PANEL
CLADDING:	DATE: 4-21-2016
SIMPLE-Z SIZE: 200	GIRT ORIENTATION: VERTICAL

# OUTSIDE SOFFIT DETAIL-3



SMARTci PLUS SYSTEM

SUBSTRATE: MASONRY

SMARTci™ RIGID INSULATION PANEL

CLADDING:

DATE: 4-21-2016

SIMPLE-Z SIZE: 200

GIRT ORIENTATION: VERTICAL

INSIDE SOFFIT DETAIL-3

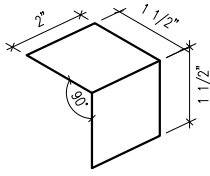
NOT TO SCALE



**ADVANCED ARCHITECTURAL PRODUCTS**

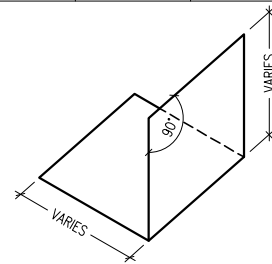
NOTE: DETAILS ARE PROVIDED FOR INFORMATION ONLY, AND ARE SUBJECT TO CHANGE WITHOUT NOTICE. SPECIFIC PROJECT ENGINEERING BY OTHERS WILL ADDRESS ATTACHMENT SPACING, ORIENTATION AND LOADING. REFER TO A2P DESIGN GUIDE FOR SEALANT REQUIREMENT. CONTACT ADVANCED ARCHITECTURAL PRODUCTS FOR FURTHER DETAILS, AND TO INQUIRE ABOUT UPDATES AND REVISIONS.

	MARK	GIRTH	BREAKS
	F1	3	1



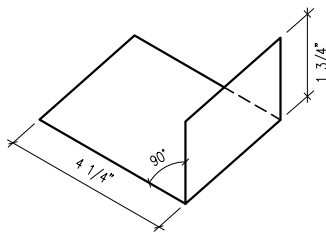
MIN. 22 GAUGE METAL 1.5"x1.5" ANGLED RETENTION CLIPS, MAX 24" O.C.

	MARK	GIRTH	BREAKS
	F2	VARIABLES	1



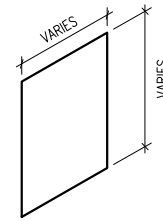
MIN. 22 GAUGE CONTINUOUS VERTICAL GALVANIZED STEEL OUTSIDE ANGLE ANGLE CORNER CLOSURE FASTENED AT EVERY GREENGIRT

	MARK	GIRTH	BREAKS
	F3	6	1



MIN. 22 GAUGE CONTINUOUS GALVANIZED STEEL 1 3/4" X 4 1/4" ANGLE CORNER CLOSURE, FASTENED AT EVERY GREENGIRT

	MARK	GIRTH	BREAKS
	F4	VARIABLES	0



MIN. 22 GAUGE CONTINUOUS GALVANIZED STEEL RETENTION PLATE, CUSTOM-SIZED TO EACH OPENING, DEPENDING ON PROJECT-SPECIFIC CONDITIONS

NOTE! REQUIRED ACCESSORIES AND METAL FLASHINGS MUST BE USED WITH THIS SYSTEM. THESE COMPONENTS CAN BE MANUFACTURED AND / OR PROVIDED BY ADVANCED ARCHITECTURAL PRODUCTS, OR BY THE CUSTOMER. THEY ARE NOT OPTIONAL, AND ARE NECESSARY FOR THE PROPER INSTALLATION AND FUNCTION OF THE SYSTEM.

PLEASE CONTACT AN A2P SALES REPRESENTATIVE WITH ANY QUESTIONS, FOR PRICING INFORMATION, OR TO INQUIRE ABOUT CUSTOM-SIZED METAL FLASHINGS AND ACCESSORIES.

GREENGIRTS AND CUSTOM-PROFILED RIGID INSULATION PANELS ARE PROVIDED FOR THIS PROJECT AS A THERMALLY-BROKEN COMPOSITE SUB-FRAMING SYSTEM AND CONTINUOUS INSULATION. THIS SYSTEM DOES NOT INCLUDE MOISTURE DRIVE DESIGN OR VAPOR BARRIER DESIGN AND PLACEMENT. WEATHER PROOFING, RESISTANCE AND / OR WATER TIGHTNESS IS THE SOLE RESPONSIBILITY OF OTHERS. PROPER FLASHINGS & COUNTER FLASHINGS MUST BE INSTALLED BY OTHERS, AND IT IS RECOMMENDED THAT PROVEN CONSTRUCTION BEST PRACTICES BE FOLLOWED AT ALL TIMES.

DO NOT INSTALL ANY A2P PRODUCT UNLESS CARE HAS BEEN TAKEN TO REVIEW ALL OF THE DOCUMENTS RELEVANT TO THE PRODUCT INSTALLATION, AND PROPER TRAINING HAS BEEN COMPLETED.

ALWAYS DEFAULT TO ARCHITECT'S DETAILS AND DESIGN INTENT! DETAILS ARE PROVIDED FOR INFORMATION ONLY, AS IT PERTAINS TO INSTALLING GREENGIRT. SPECIFIC PROJECT ENGINEERING (BY OTHERS) WILL ADDRESS ATTACHMENT SPACING, ORIENTATION AND LOADING. ALWAYS REVIEW LOADING REQUIREMENTS WITH THE PROJECT ENGINEER, AND USE APPROPRIATE FASTENERS AND SPACING.

USE PLASTIC HORSESHOE SHIMS WHERE REQUIRED TO ACHIEVE ± 1/16" DEFLECTION; MAX. SHIM DEPTH IS 1/4". USE SPRAY FOAM AT ALL VOIDS TO ENSURE CONTINUOUS INSULATION. DO NOT USE IMPACT HAMMERS, IMPACT DRILLS OR SIMILAR TOOLS TO INSTALL GREENGIRT!

ADVANCED ARCHITECTURAL PRODUCTS MAKES NO CLAIMS OR GUARANTEES ABOUT ANY ITEMS MANUFACTURED BY OTHERS. ADVANCED ARCHITECTURAL PRODUCTS IS NOT RESPONSIBLE FOR QUANTITIES ORDERED. RECOMMENDED QUANTITIES MUST BE VERIFIED AND ARE THE RESPONSIBILITY OF THE CUSTOMER. REFER TO THE SMARTci INSTALLATION GUIDE FOR DIRECTIONS AND MORE INFORMATION.



**SMARTci PLUS SYSTEM**

[www.SMARTciSystems.com](http://www.SMARTciSystems.com)

1 (269) 355-1818

SUBSTRATE: MASONRY	SMARTci™ RIGID INSULATION PANEL
CLADDING:	DATE: 4-21-2016
SIMPLE-Z SIZE: 200	GIRTH ORIENTATION: VERTICAL

# METAL ACCESSORIES

NOT TO SCALE