



CONTINUOUS SMARTci 4" SEALING TAPE OVER ALL GREENGIRT AND OVER ALL PANEL JOINTS, TYP.

SMARTci CUSTOM-PROFILED RIGID INSULATION PANEL

GREENGIRTS ATTACHED TO SUBSTRATE; SPACING AS REQUIRED PER LOADING CONDITIONS AND CODES

AT EACH INSULATION PANEL CORNER, A BEAD OF APPROVED SEALANT MIN. 2" IN EACH DIRECTION.

VARIES

OVER OPEN FRAMING, FILL ALL INTERIOR SMARTci VOIDS WITH APPROVED EXPANDABLE SEALANT, TYP.

APPROVED 1/4"-14 LOW-PROFILE FASTENERS, MAX. 16" O.C., TYP. (BY OTHERS)

OPTIONAL CAVITY BATT INSULATION (BY OTHERS)

OPTIONAL INTERIOR VAPOR RETARDER (BY OTHERS)

OPEN METAL (OR WOOD) FRAMING (BY OTHERS)



SMARTci+ System

SUBSTRATE: OPEN FRAMING

CLADDING: -

SIMPLE-Z SIZE: 200

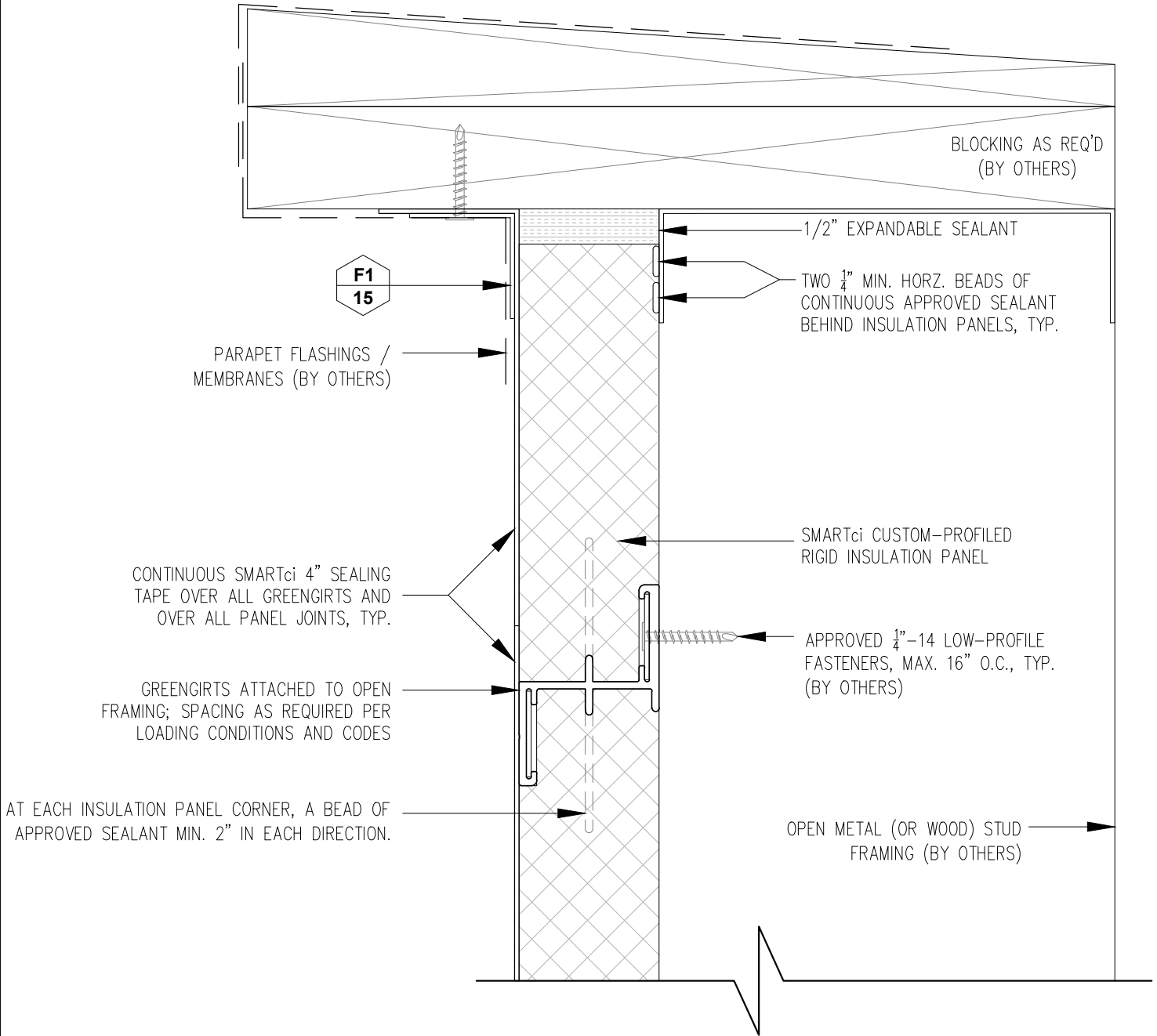
SMARTci™ RIGID INSULATION PANEL

DATE: 04-22-2016

GIRT ORIENTATION: HORIZONTAL

WALL SECTION

NOT TO SCALE



SMARTci+ System

www.SMARTciSystems.com

1 (269) 355-1818

SUBSTRATE: OPEN FRAMING

CLADDING: -

SIMPLE-Z SIZE: 200

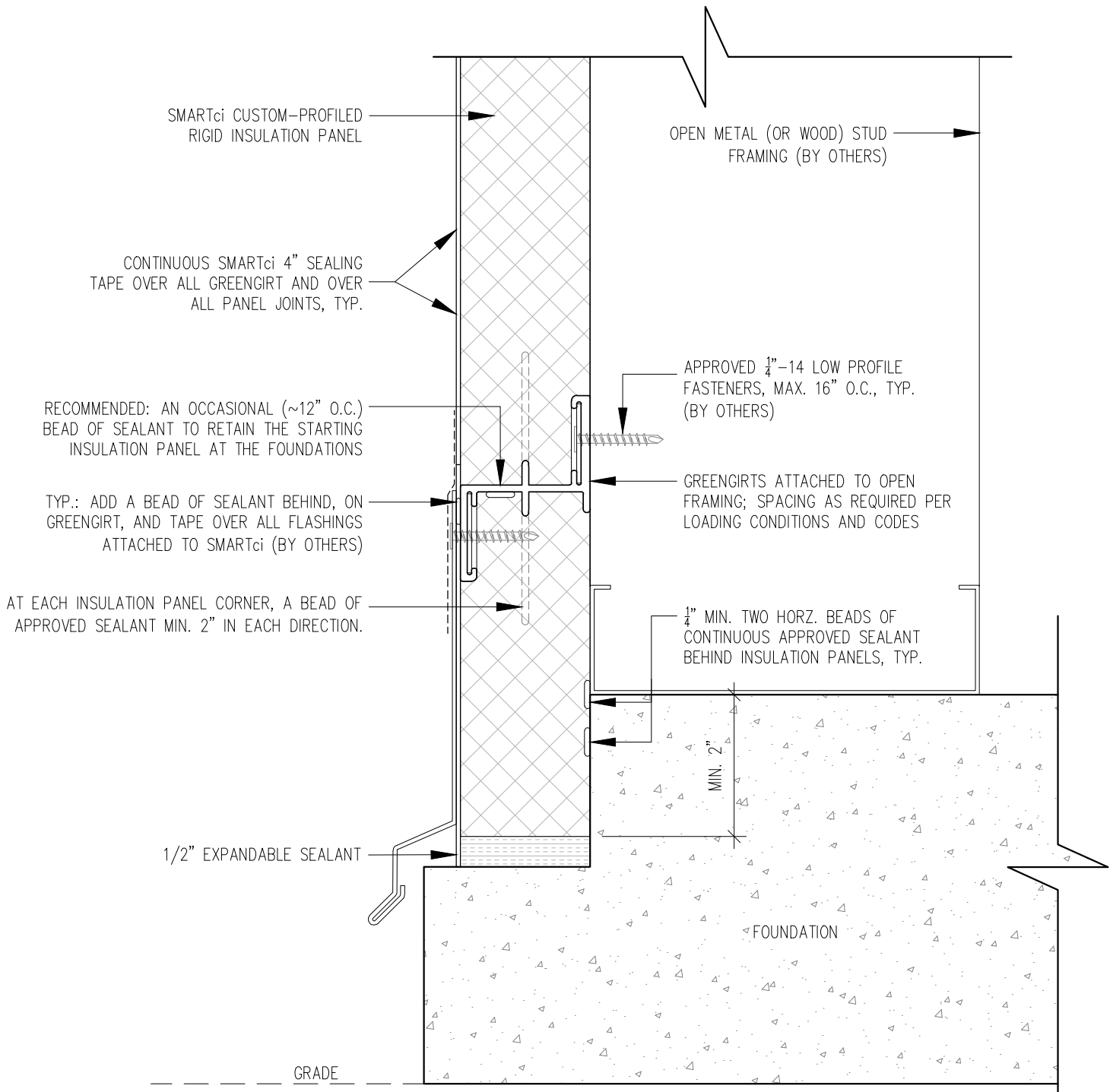
SMARTci™ RIGID INSULATION PANEL

DATE: 04-22-2016

GIRT ORIENTATION: HORIZONTAL

PARAPET DETAIL

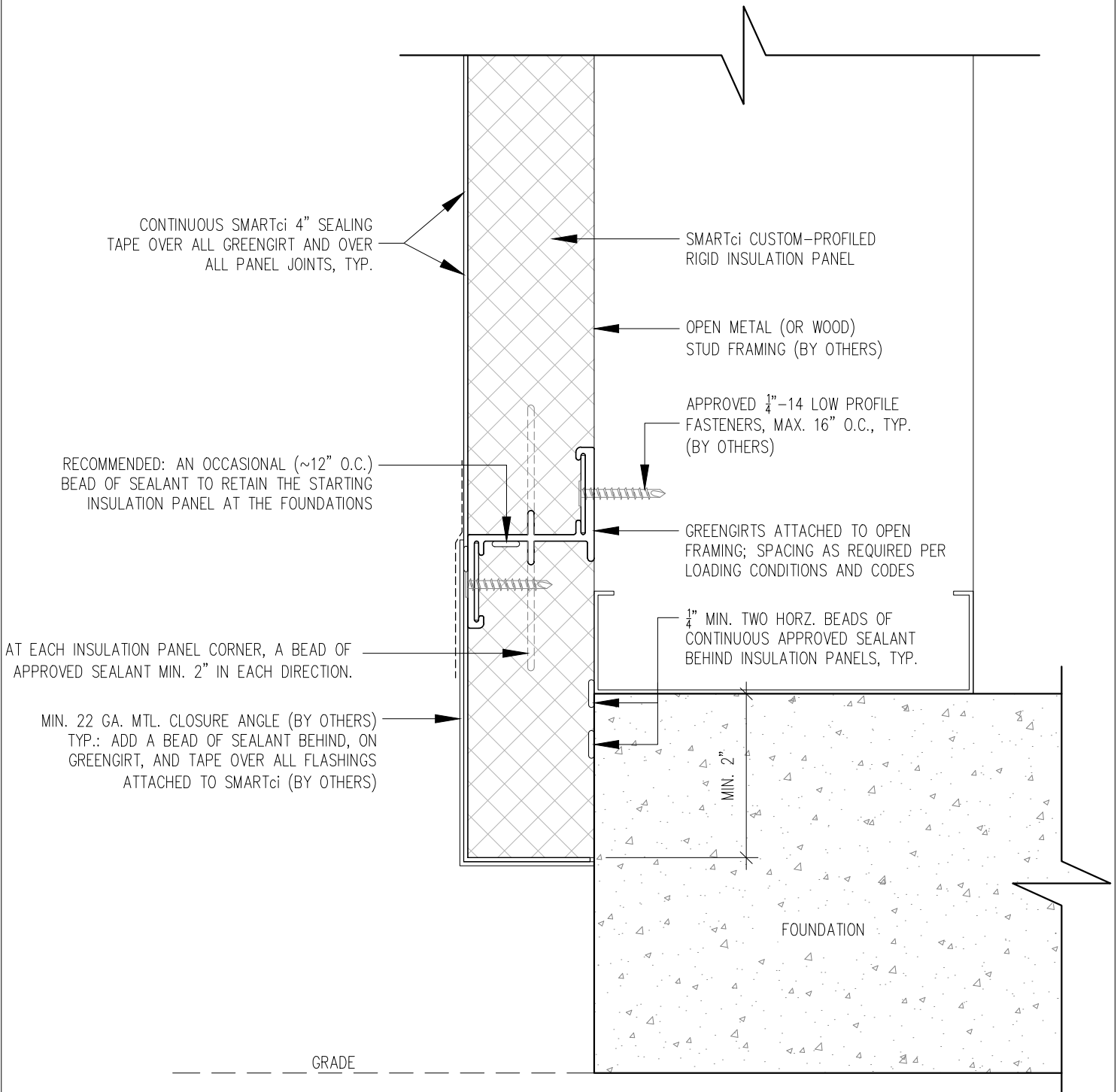
NOT TO SCALE



SMARTci+ System

SUBSTRATE: OPEN FRAMING	SMARTci™ RIGID INSULATION PANEL
CLADDING: -	DATE: 04-22-2016
SIMPLE-Z SIZE: 200	GIRT ORIENTATION: HORIZONTAL

FOUNDATION NOTCH DETAIL



SMARTci+ System

SUBSTRATE: OPEN FRAMING

CLADDING: -

SIMPLE-Z SIZE: 200

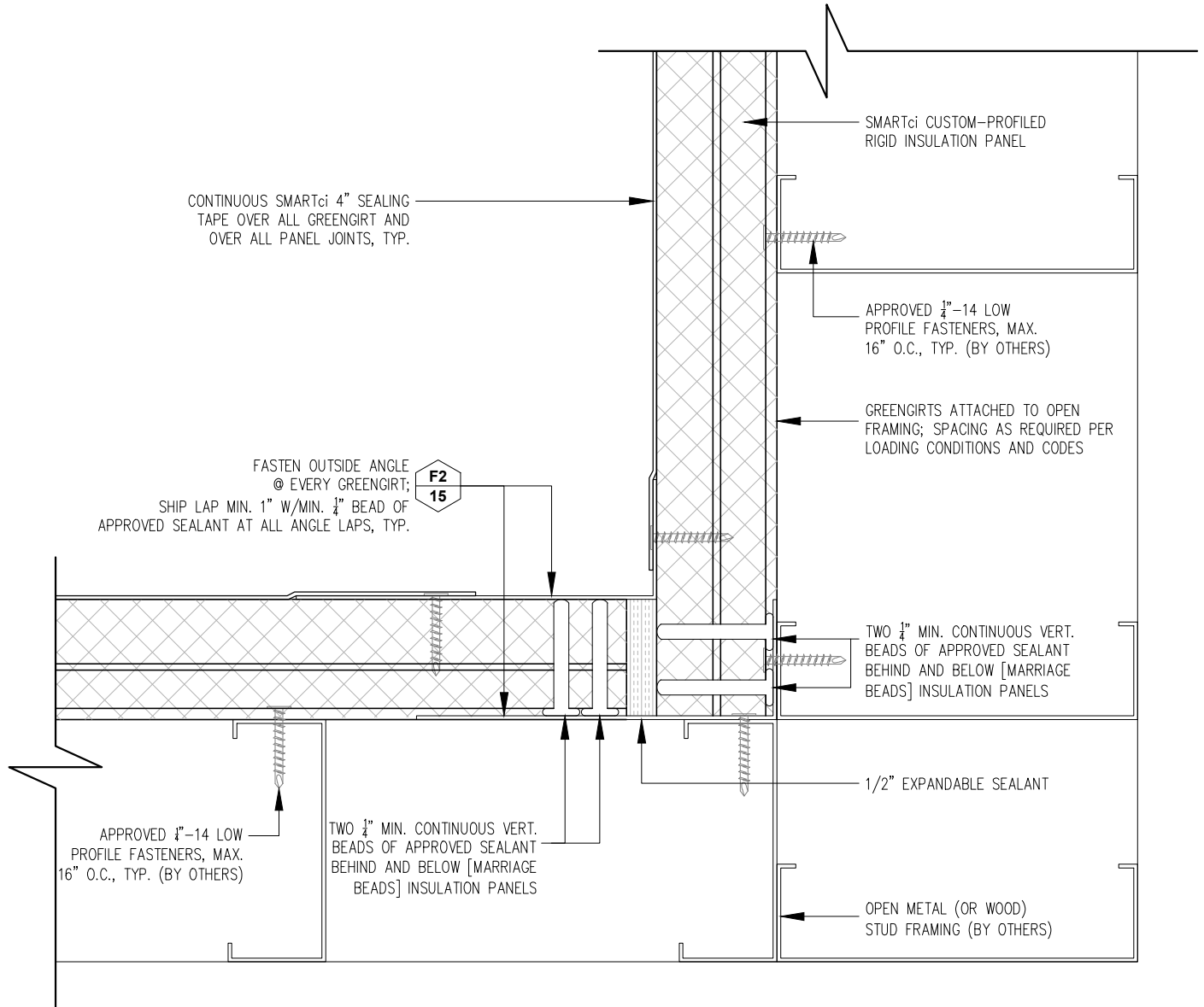
SMARTci™ RIGID INSULATION PANEL

DATE: 04-22-2016

GIRT ORIENTATION: HORIZONTAL

FOUNDATION FLUSH DETAIL

NOT TO SCALE



SMARTci+ System

SUBSTRATE: OPEN FRAMING

CLADDING: -

SIMPLE-Z SIZE: 200

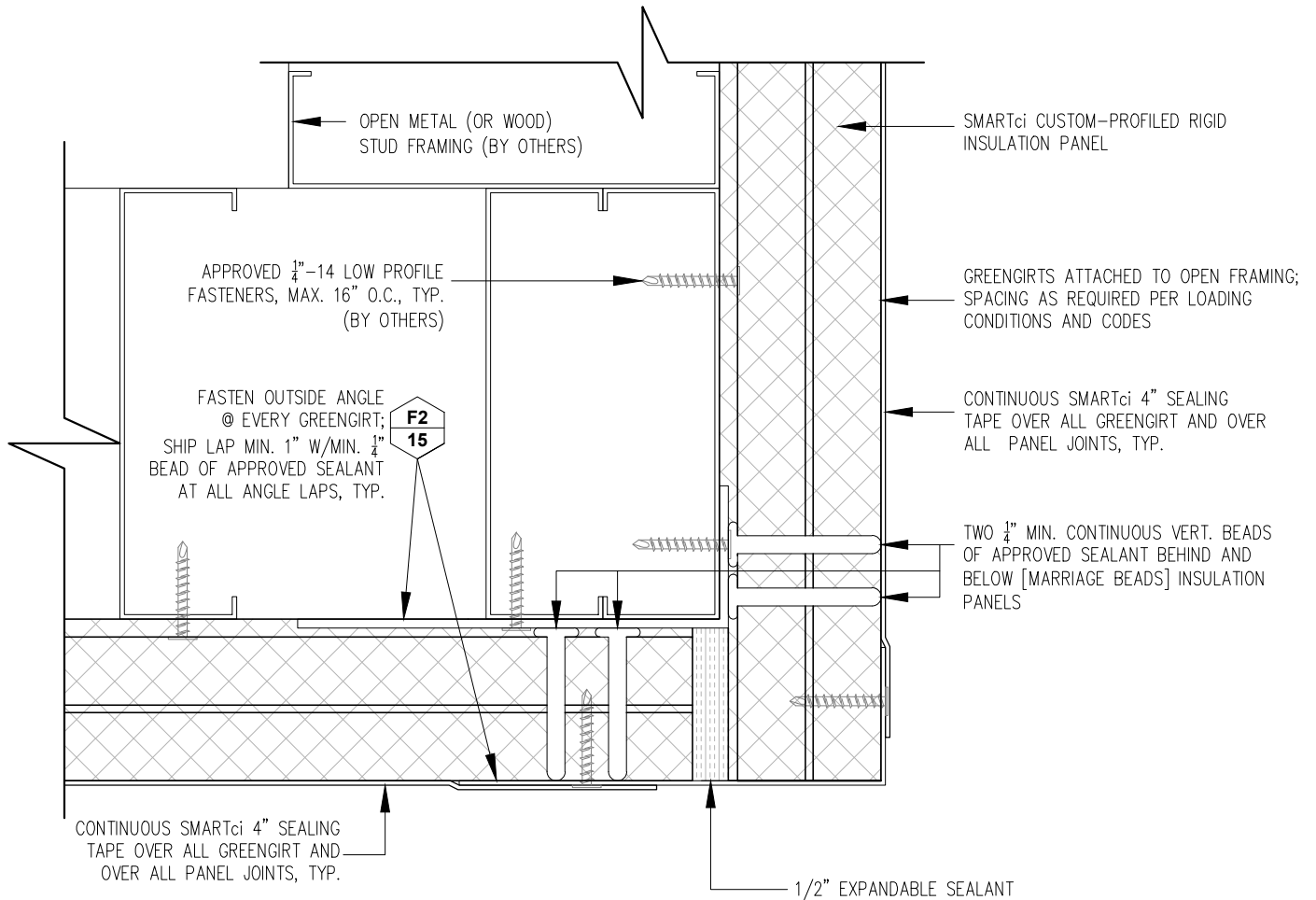
SMARTci™ RIGID INSULATION PANEL

DATE: 04-22-2016

GIRT ORIENTATION: HORIZONTAL

INSIDE CORNER DETAIL

NOT TO SCALE



SMARTci+ System

SUBSTRATE: OPEN FRAMING

CLADDING: -

SIMPLE-Z SIZE: 200

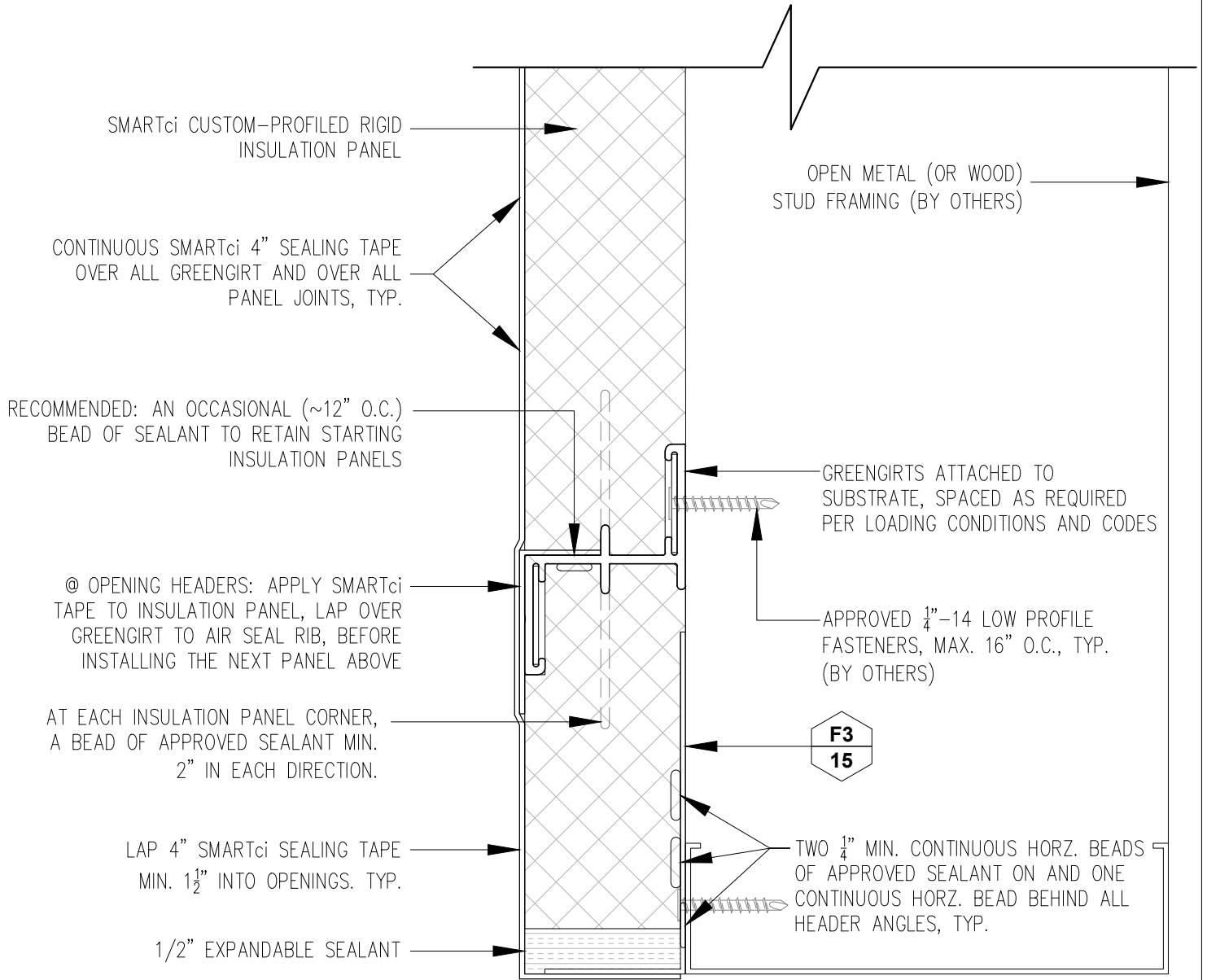
SMARTci™ RIGID INSULATION PANEL

DATE: 04-22-2016

GIRT ORIENTATION: HORIZONTAL

OUTSIDE CORNER DETAIL

NOT TO SCALE

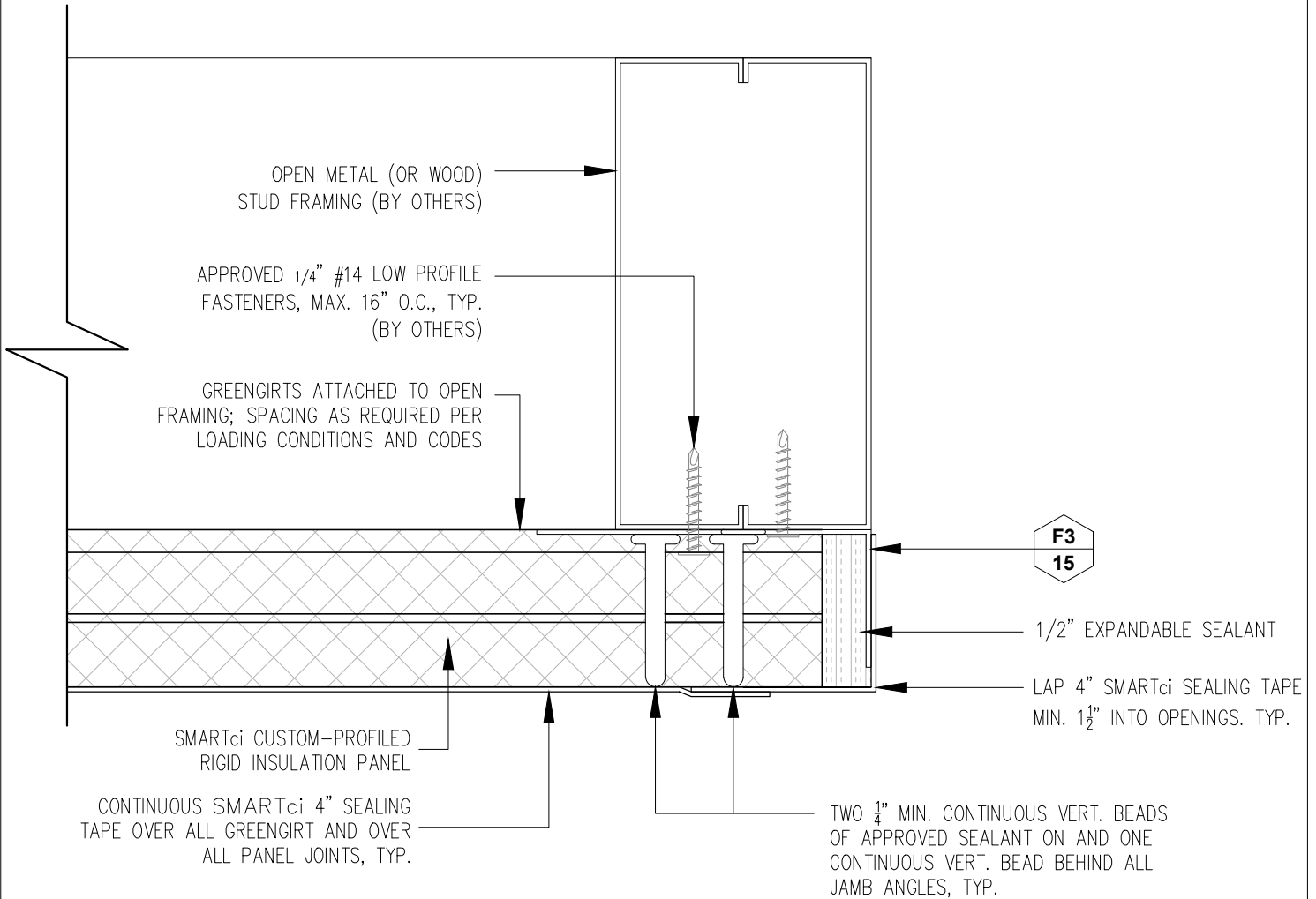


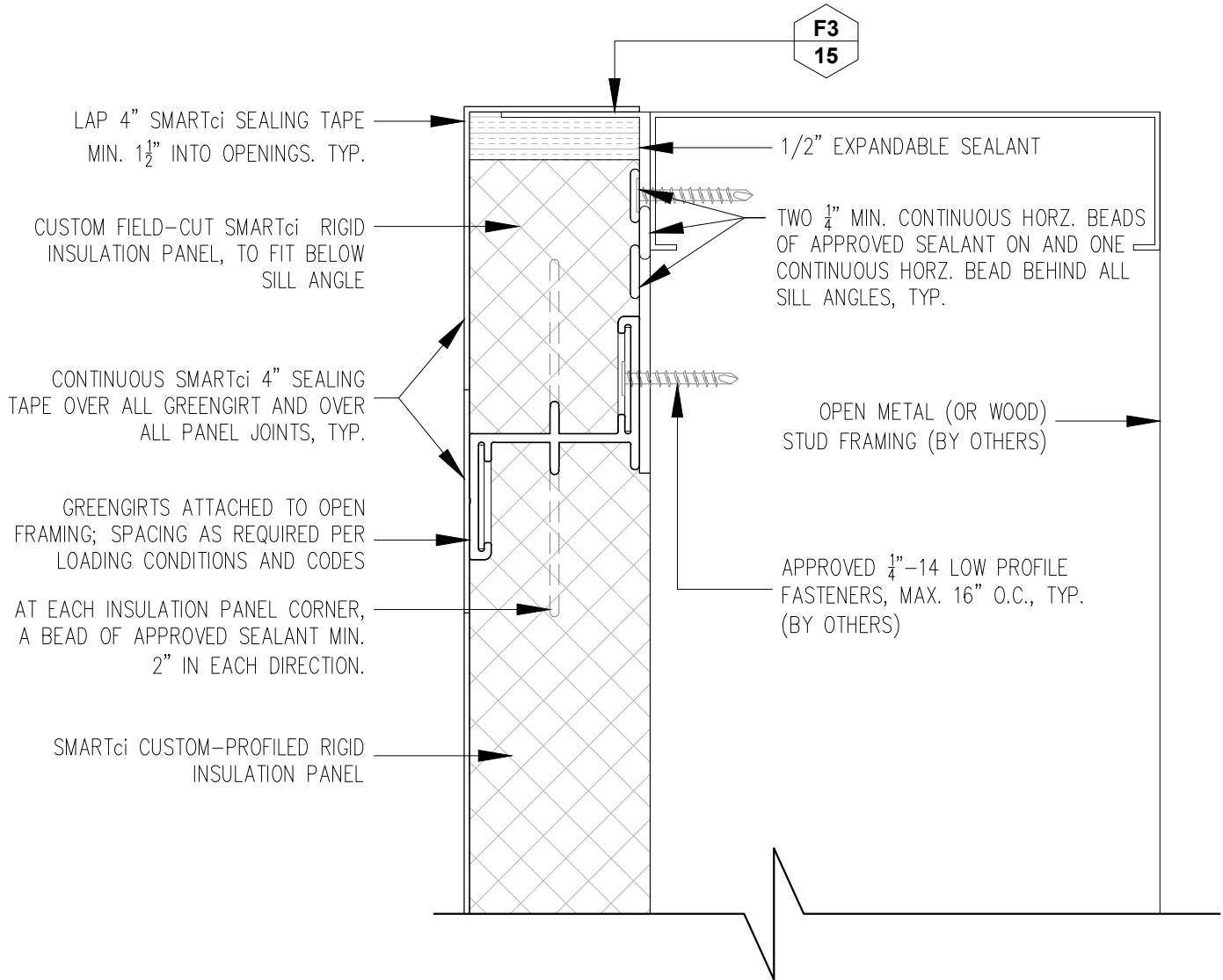
SMARTci+ System

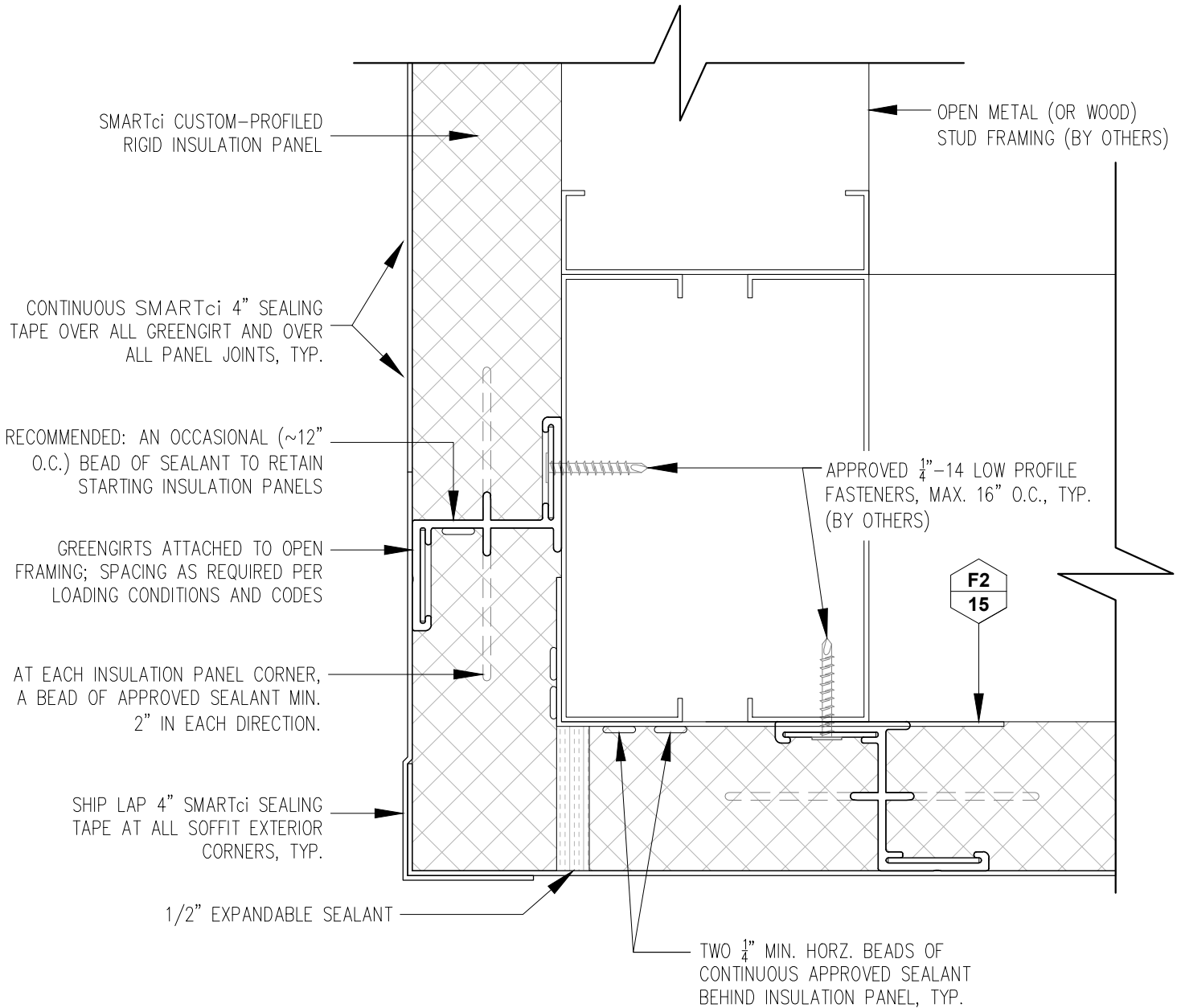
SUBSTRATE: OPEN FRAMING	SMARTci™ RIGID INSULATION PANEL
CLADDING: -	DATE: 04-22-2016
SIMPLE-Z SIZE: 200	GIRT ORIENTATION: HORIZONTAL

HEADER DETAIL

NOT TO SCALE







SMARTci+ System

SUBSTRATE: OPEN FRAMING

CLADDING: -

SIMPLE-Z SIZE: 200

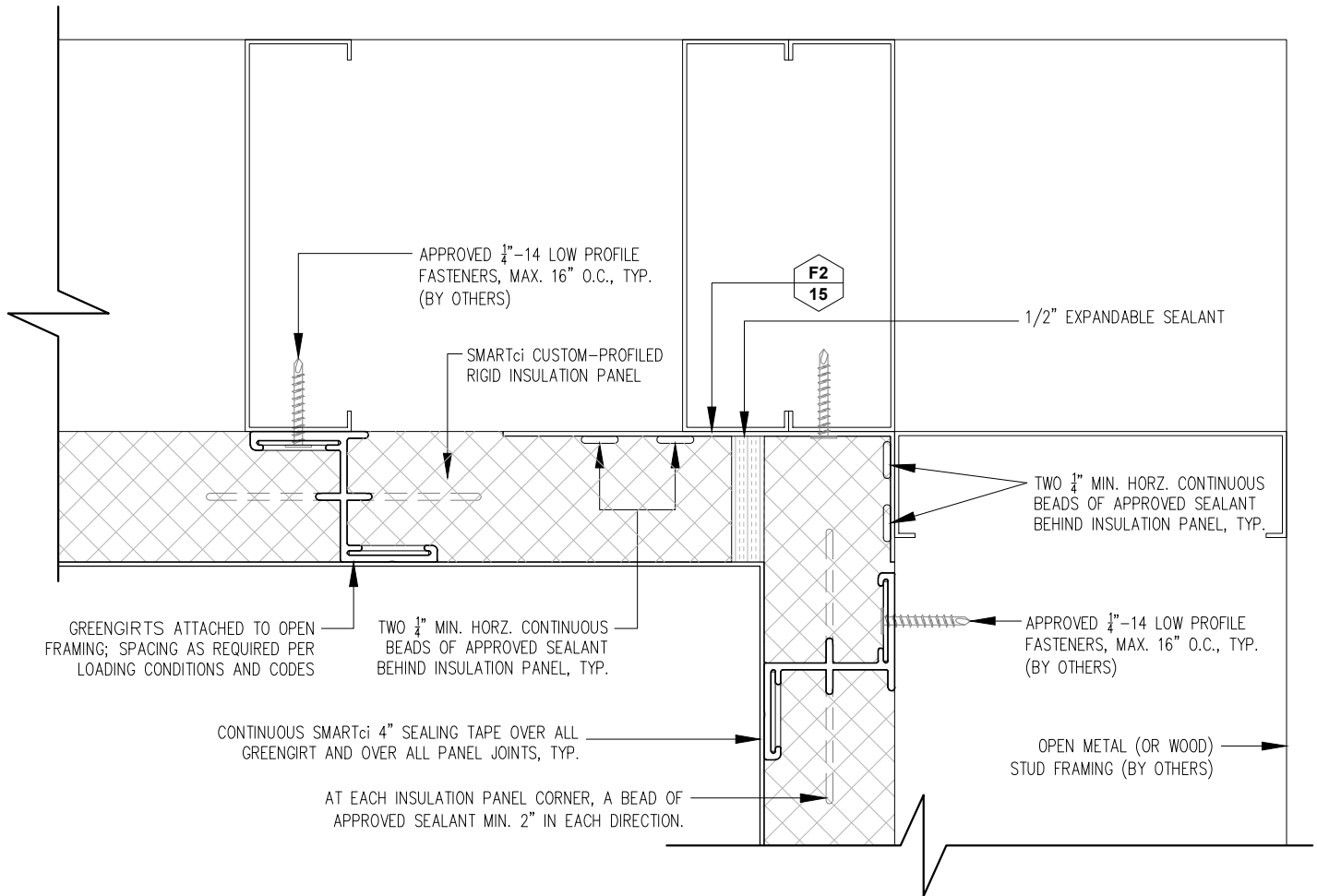
SMARTci™ RIGID INSULATION PANEL

DATE: 04-22-2016

GIRT ORIENTATION: HORIZONTAL

SOFFIT OUTSIDE DETAIL-1

NOT TO SCALE



SMARTci+ System

SUBSTRATE: OPEN FRAMING

CLADDING: –

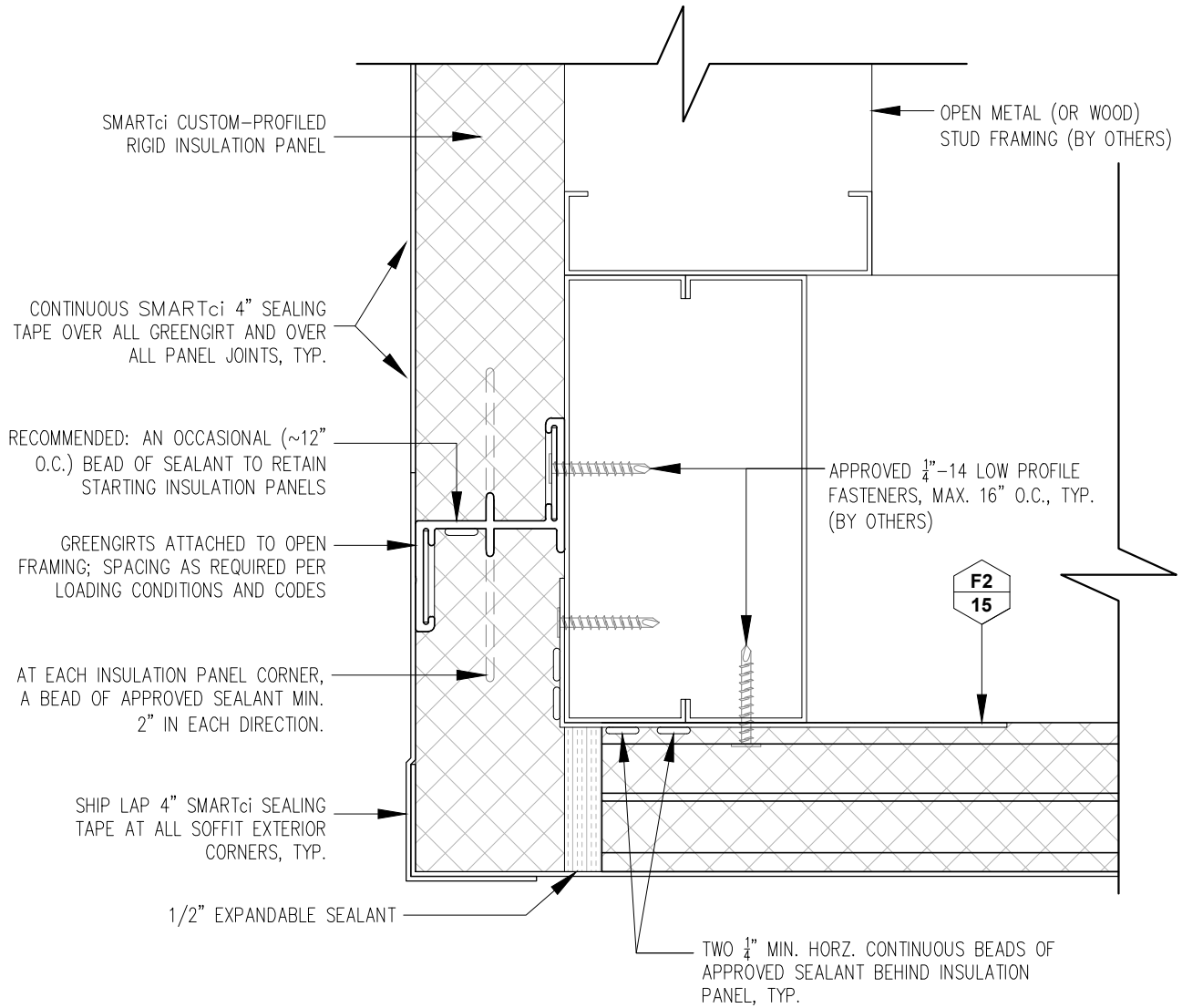
SIMPLE-Z SIZE: 200

SMARTci™ RIGID INSULATION PANEL

DATE: 04-22-2016

GIRT ORIENTATION: HORIZONTAL

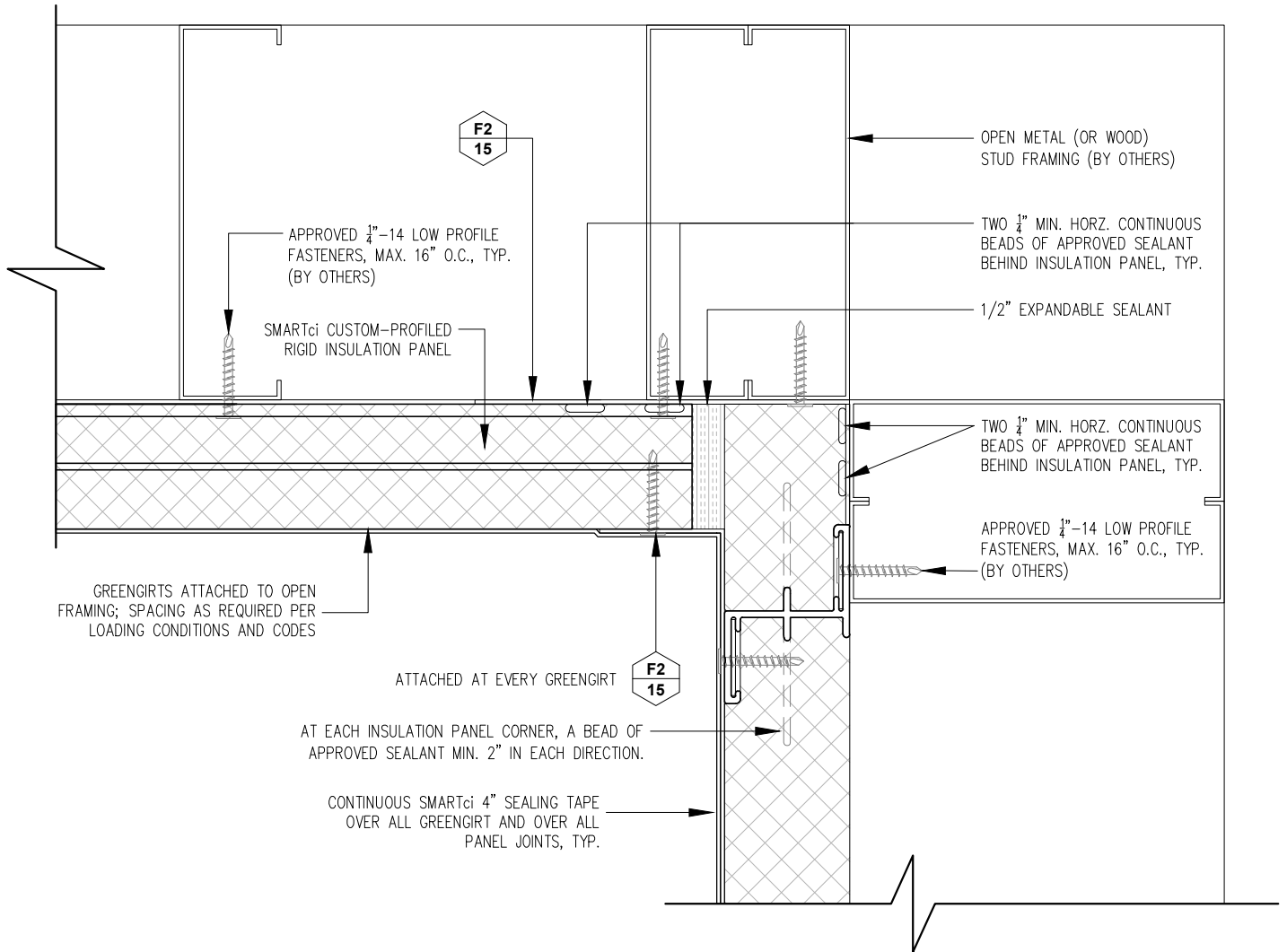
SOFFIT INSIDE DETAIL-1

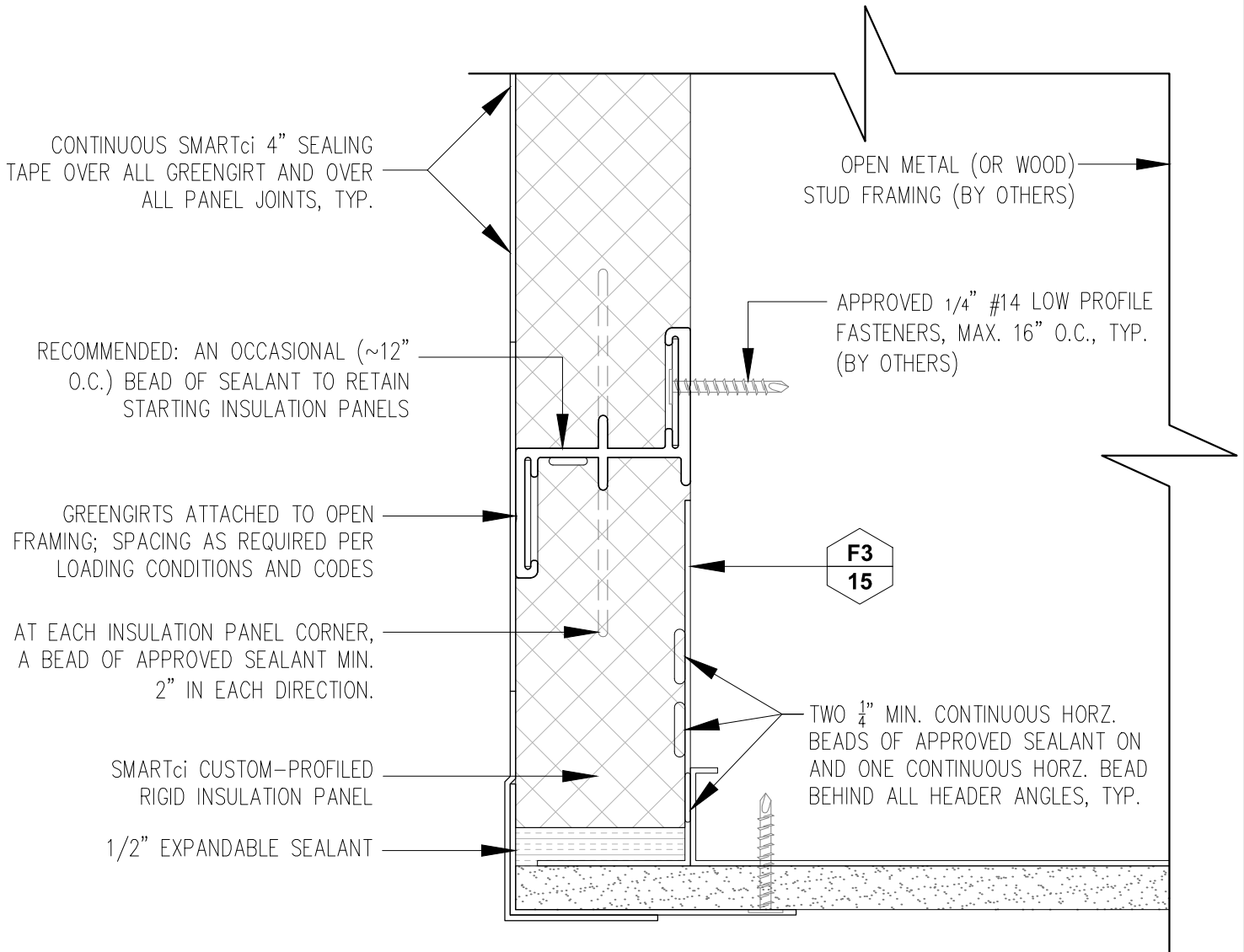


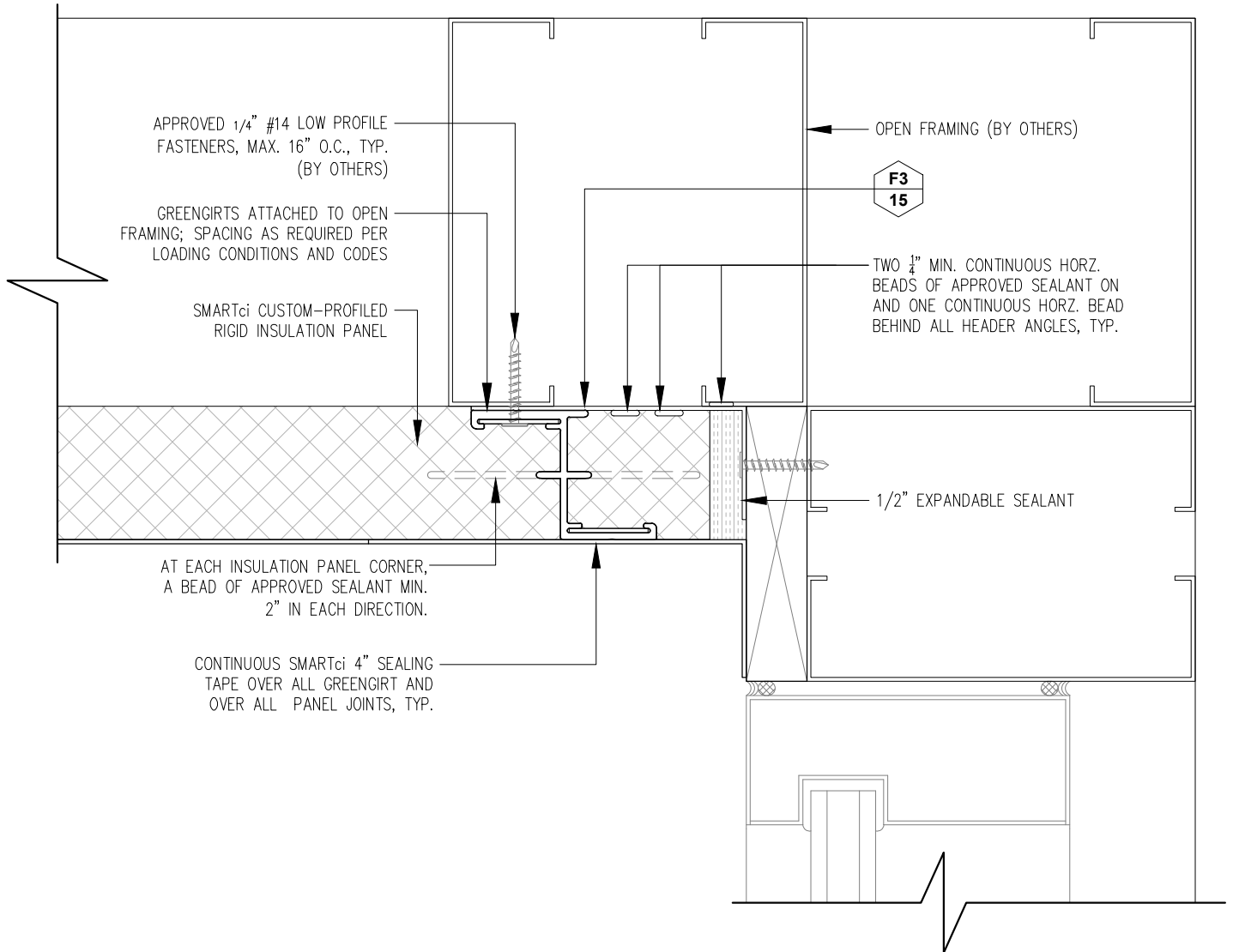
SMARTci+ System

SUBSTRATE: OPEN FRAMING	SMARTci™ RIGID INSULATION PANEL
CLADDING: -	DATE: 04-22-2016
SIMPLE-Z SIZE: 200	GIRT ORIENTATION: HORIZONTAL

SOFFIT OUTSIDE DETAIL-2









	MARK	GIRTH	BREAKS
	F1	3	1

MIN. 22 GAUGE METAL 1 1/2" x 1 1/2" ANGLED RETENTION CLIPS, MAX 24" O.C.

	MARK	GIRTH	BREAKS
	F4	8	1

MIN. 22 GAUGE CONTINUOUS GALVANIZED STEEL 6" X 2" ANGLE CORNER CLOSURE, FASTENED AT EVERY GREENGIRT

	MARK	GIRTH	BREAKS
	F3	6	1

MIN. 22 GAUGE CONTINUOUS GALVANIZED STEEL 1 3/4" X 4 1/4" ANGLE CORNER CLOSURE, FASTENED AT EVERY GREENGIRT

NOTE! REQUIRED ACCESSORIES AND METAL FLASHINGS MUST BE USED WITH THIS SYSTEM. THESE COMPONENTS CAN BE MANUFACTURED AND / OR PROVIDED BY ADVANCED ARCHITECTURAL PRODUCTS, OR BY THE CUSTOMER. THEY ARE NOT OPTIONAL, AND ARE NECESSARY FOR THE PROPER INSTALLATION AND FUNCTION OF THE SYSTEM.

PLEASE CONTACT AN A2P SALES REPRESENTATIVE WITH ANY QUESTIONS, FOR PRICING INFORMATION, OR TO INQUIRE ABOUT CUSTOM-SIZED METAL FLASHINGS AND ACCESSORIES.

GREENGIRTS AND CUSTOM-PROFILED RIGID INSULATION PANELS ARE PROVIDED FOR THIS PROJECT AS A THERMALLY-BROKEN COMPOSITE SUB-FRAMING SYSTEM AND CONTINUOUS INSULATION. THIS SYSTEM DOES NOT INCLUDE MOISTURE DRIVE DESIGN OR VAPOR BARRIER DESIGN AND PLACEMENT. WEATHER PROOFING, RESISTANCE AND / OR WATER TIGHTNESS IS THE SOLE RESPONSIBILITY OF OTHERS. PROPER FLASHINGS & COUNTER FLASHINGS MUST BE INSTALLED BY OTHERS, AND IT IS RECOMMENDED THAT PROVEN CONSTRUCTION BEST PRACTICES BE FOLLOWED AT ALL TIMES.

DO NOT INSTALL ANY A2P PRODUCT UNLESS CARE HAS BEEN TAKEN TO REVIEW ALL OF THE DOCUMENTS RELEVANT TO THE PRODUCT INSTALLATION, AND PROPER TRAINING HAS BEEN COMPLETED.

ALWAYS DEFAULT TO ARCHITECT'S DETAILS AND DESIGN INTENT! DETAILS ARE PROVIDED FOR INFORMATION ONLY, AS IT PERTAINS TO INSTALLING GREENGIRT. SPECIFIC PROJECT ENGINEERING (BY OTHERS) WILL ADDRESS ATTACHMENT SPACING, ORIENTATION AND LOADING. ALWAYS REVIEW LOADING REQUIREMENTS WITH THE PROJECT ENGINEER, AND USE APPROPRIATE FASTENERS AND SPACING.

USE PLASTIC HORSESHOE SHIMS WHERE REQUIRED TO ACHIEVE ± 1/16" DEFLECTION; MAX. SHIM DEPTH IS 1/4". USE SPRAY FOAM AT ALL VOIDS TO ENSURE CONTINUOUS INSULATION. DO NOT USE IMPACT HAMMERS, IMPACT DRILLS OR SIMILAR TOOLS TO INSTALL GREENGIRT!

ADVANCED ARCHITECTURAL PRODUCTS MAKES NO CLAIMS OR GUARANTEES ABOUT ANY ITEMS MANUFACTURED BY OTHERS. ADVANCED ARCHITECTURAL PRODUCTS IS NOT RESPONSIBLE FOR QUANTITIES ORDERED. RECOMMENDED QUANTITIES MUST BE VERIFIED AND ARE THE RESPONSIBILITY OF THE CUSTOMER. REFER TO THE SMARTci INSTALLATION GUIDE FOR DIRECTIONS AND MORE INFORMATION.

SMARTci
SMARTER BY DESIGN. PROVEN BY PERFORMANCE.

SMARTci+ System

www.SMARTciSystems.com 1 (269) 355-1818

SUBSTRATE OPEN FRAMING	SMARTci™ RIGID INSULATION PANEL
CLADDING: -	DATE: 04-22-2016
SIMPLE-Z SIZE: 200	GIRT ORIENTATION: HORIZONTAL
<h1>ACCESSORIES & GEN. NOTES</h1>	
NOT TO SCALE	